

# BLOEMSKOU

2 MEI 2019



## Beoordelaars:

Willie O'Brien, Gert Nienaber

## Vertoners:

	Abraham en Niel Van Heerden	Bethlehem	072 207 1600
PA	Abrahamse	Three Rivers	082 568 1212
	Andrew Masterson Family Trust	Humansdorp	082 321 1462
	Boekenhout Trust	Klerksdorp	082 460 8443
	Legacy Trust	Bloemfontein	082 938 3037
L	Meyer	Kuruman	084 254 9763
	Stansim Simmentalers	Faerie Glen	082 777 0250
	Tendele Farms Trust	Senekal	082 782 3055

- ▶ Kalwings / Simdeks volgens geboortekennisgewings op kantoor ten tye van katalogus samestelling.
- ▶ Reproduksie op kaarte: (i) Koeie onder 4 jaar = ouderdom en getal kalwings en (ii) koeie oor 4 jaar = ouderdom en Simdeks.
- ▶ Langer as 15 maande gelede gekalf = mde in rooi op kaart.
- ▶ 1 ste kalwing onder 24 mde = Aangepaste skou-simdeks.
- ▶ Maksimaal drie spoeling tussen 1ste en laaste kalwing tel vir simdeks.
- ▶ Superkoei = Spoelings, aborsie en dooie kalwers tel nie.
- ▶ Minimum diere vir nasionale kompetisies: Superkoei 5, Uierklas 10, Blupklas 10 en Skoubul v d Jaar 5/klas.
- ▶ Meeste punte: Alle klasse (kampioene uitgesluit) 6,5,4,3,2,1. Alle groepe 7,6,5,4,3,2.

**KLAS 1: MOEDERAFSTAMMELINGSGROEP** – Twee kalwers enige geslag (manlik ouer en vroulik ouer as 9 maande) van 'n koei wat nie in hierdie klas vertoon word nie.

58.

ASMER RENE 23 P

ASM121

TENDELE FARMS TRUST

1<sup>ste</sup> \_\_\_\_\_

2<sup>de</sup> \_\_\_\_\_

3<sup>de</sup> \_\_\_\_\_

4<sup>de</sup> \_\_\_\_\_

5<sup>de</sup> \_\_\_\_\_

6<sup>de</sup> \_\_\_\_\_

**KLAS 2: VADERAFSTAMMELINGSGROEP** – bestaande uit drie dogters oor 9 maande.

*GEEN INSKRYWINGS / NO ENTRIES*

1<sup>ste</sup> \_\_\_\_\_

2<sup>de</sup> \_\_\_\_\_

3<sup>de</sup> \_\_\_\_\_

4<sup>de</sup> \_\_\_\_\_

5<sup>de</sup> \_\_\_\_\_

6<sup>de</sup> \_\_\_\_\_

**KLAS 3: VADERAFSTAMMELINGSGROEP** – bestaande uit drie seuns oor 9 maande.

*GEEN INSKRYWINGS / NO ENTRIES*

1<sup>ste</sup> \_\_\_\_\_

2<sup>de</sup> \_\_\_\_\_

3<sup>de</sup> \_\_\_\_\_

4<sup>de</sup> \_\_\_\_\_

5<sup>de</sup> \_\_\_\_\_

6<sup>de</sup> \_\_\_\_\_

**KLAS 4: VADERAFSTAMMELINGSGROEP** – bestaande uit twee dogters (oor 9 maande) en twee seuns (oor 9 maande).

59.

SALERIKA UG13259 A

UG13259

TENDELE FARMS TRUST

1<sup>ste</sup> \_\_\_\_\_

2<sup>de</sup> \_\_\_\_\_

3<sup>de</sup> \_\_\_\_\_

4<sup>de</sup> \_\_\_\_\_

5<sup>de</sup> \_\_\_\_\_

6<sup>de</sup> \_\_\_\_\_

**KLAS 5: Senior koei (oor 3 jaar) in melk en met beste uier.**

Inskrywings tydens skou, indien dier ook by klas 7, 9 of 11 ingeskryf is.

Lot	Naam van Dier	ID	Vertoner

1 <sup>ste</sup> _____	2 <sup>de</sup> _____	3 <sup>de</sup> _____
4 <sup>de</sup> _____	5 <sup>de</sup> _____	6 <sup>de</sup> _____

**KLAS 6: Junior koei (onder 3 jaar) in melk en met beste uier.**

Inskrywings tydens skou, indien dier ook by klas 14, 16 of 18 ingeskryf is.

Lot	Naam van Dier	ID	Vertoner

1 <sup>ste</sup> _____	2 <sup>de</sup> _____	3 <sup>de</sup> _____
4 <sup>de</sup> _____	5 <sup>de</sup> _____	6 <sup>de</sup> _____

**KLAS 7: Koei in melk, 6 jaar en ouer.****RIVERVALLEY BERYL (AI)****AB1272**

Gebore: 2012/11/02

PA ABRAHAMSE, P O BOX 263336 THREE RIVERS 1935

(77)

Kalwings: 4  
15/01/24 16/01/31 17/02/17 19/01/31  
TKP: 490  
Simdeks: 86  
Kuddeboek: SP  
Reg. Status: REG

♂ Vader: UG0627 SALERIKA JOCK  
UG0938 SALERIKA BRANDER  
UG0534 SALERIKA UG0534 B  
CMO0228 RU-DEV BRAAM  
♀ Moeder: PJO0521 TAAIBOSSPRUIT BERBRA \*  
Simdeks: 99  
TKP: 379  
PJO02201 TAAIBOSSPRUIT BERTA

Moeder Kalwings: 07/08/22 08/11/02 09/10/28 10/11/30 11/11/12 12/11/02 13/10/30 14/11/01 15/11/07 16/12/23 18/02/01 19/01/14

2019	CED	CEM	BW	WW	YW	FW	MCW	Milk	DtC	SS	EMA	IMF%	RBY%	SFL	SGF	TS
EBV	-1.8	-0.3	+2.5	+19	+35	+38	+33	+5	+0.2	+0.8	+1.9	+0.0	+1.1	+100	+146	+195
ACC	50%	43%	74%	64%	65%	64%	62%	52%	31%	37%	35%	37%	40%			
Breed	+0.6	+0.7	+1.5	+17	+26	+32	+33	+5	-0.5	+0.3	+0.2	+0.1	+0.2	+51	+103	+132

1<sup>ste</sup> \_\_\_\_\_ 2<sup>de</sup> \_\_\_\_\_ 3<sup>de</sup> \_\_\_\_\_  
4<sup>de</sup> \_\_\_\_\_ 5<sup>de</sup> \_\_\_\_\_ 6<sup>de</sup> \_\_\_\_\_

**KLAS 8: Koei droog, 6 jaar en ouer.****RIVERVALLEY PIPA (AI)****AB122**

Gebore: 2012/01/05

PA ABRAHAMSE, P O BOX 263336 THREE RIVERS 1935

(87)

Kalwings: 5  
14/01/08 15/06/03 16/06/18 17/06/19 18/05/03  
TKP: 394  
Simdeks: 103  
Kuddeboek: SP  
Reg. Status: REG

♂ Vader: CO01447 BAR 5 S.A. MR OPTIMAL 447L  
CO04801 BAR 5 S.A. HARRACH  
CO02409 BAR 5 S.A. LADY SISKI 409M  
WC0078 WISP-WILL DEREK 3  
♀ Moeder: AB068 RIVERVALLEY PAMMY 3  
Simdeks: 93  
TKP: 405  
WC0152 WISP-WILL PAMMY 8

Moeder Kalwings: 08/09/03 09/11/13 11/03/04 12/01/05 13/02/19 14/03/14 15/05/27 16/05/26 17/09/15 18/08/23

2019	CED	CEM	BW	WW	YW	FW	MCW	Milk	DtC	SS	EMA	IMF%	RBY%	SFL	SGF	TS
EBV	+4.0	-0.1	+1.7	+23	+39	+48	+56	+4	--	+0.6	--	--	--	+59	+117	+210
ACC	48%	43%	74%	67%	69%	71%	70%	52%		36%						
Breed	+0.6	+0.7	+1.5	+17	+26	+32	+33	+5	-0.5	+0.3	+0.2	+0.1	+0.2	+51	+103	+132

1<sup>ste</sup> \_\_\_\_\_ 2<sup>de</sup> \_\_\_\_\_ 3<sup>de</sup> \_\_\_\_\_  
4<sup>de</sup> \_\_\_\_\_ 5<sup>de</sup> \_\_\_\_\_ 6<sup>de</sup> \_\_\_\_\_

**KLAS 9: Koei in melk, 4 – 6 jaar.****SALERIKA UG13201 E****UG13201**

Gebore: 2013/10/03

TENDELE FARMS TRUST, POSBUS 73 SENEKAL 9600

(66)

Kalwings: 4  
15/09/11 16/11/20 17/11/01 19/03/13  
TKP: 427  
Simdeks: 101  
Kuddeboek: SP  
Reg. Status: REG

♂ Vader: UG0644 SALERIKA UTHA  
UG1014 SALERIKA UG10014 F  
UG9929 SALERIKA FINOLA \*\*\*  
UG03114 SALERIKA ARLO  
♀ Moeder: UG07161 SALERIKA UG07161 E (P) \*\*\*  
Simdeks: 105  
TKP: 374  
UG0189 SALERIKA ELGA 2DE \*\*\*

Moeder Kalwings: 09/09/04 10/09/11 11/10/24 12/11/06 13/10/03 14/09/18 15/10/26

2019	CED	CEM	BW	WW	YW	FW	MCW	Milk	DtC	SS	EMA	IMF%	RBY%	SFL	SGF	TS
EBV	+3.6	+2.5	+2.4	+23	+39	+50	+55	+5	+1.7	+1.3	+0.5	+0.2	-0.1	+59	+119	+202
ACC	44%	36%	76%	68%	68%	72%	69%	51%	41%	31%	35%	39%	43%			
Breed	+0.6	+0.7	+1.5	+17	+26	+32	+33	+5	-0.5	+0.3	+0.2	+0.1	+0.2	+51	+103	+132

4

**MILAGRO AMY 1471****ACM1471**

Gebore: 2014/09/07

 **ANDREW MASTERSON FAMILY TRUST, P O BOX 117 HUMANSDORP 6300**

**(55)**

Kalwings: 3  
 17/02/03 17/12/26 18/12/21

 **Vader: ACM1212 MILAGRO LEXINGTON 1212**  
 CO04801 BAR 5 S.A. HARRACH  
 JJM0432 JASTLEM SANTJIE

TKP: 343

Simdeks: 105

Kuddeboek: SP

Reg. Status: REG

 **Moeder: ACM0912 MILAGRO AMY 0912**  
 UG0481 SALERIKA EKSELLENT  
 Simdeks: 101  
 TKP: 358

 ACM0561H MILAGRO ACM0561H

Moeder Kalwings: 11/09/26 12/10/19 13/09/22 14/09/07 15/08/22 16/08/17

2019	CED	CEM	BW	WW	YW	FW	MCW	Milk	DtC	SS	EMA	IMF%	RBY%	SFL	SGF	TS
EBV	+1.7	-1.9	+1.1	+19	+30	+34	+37	+5	--	-0.1	--	--	--	+52	+97	+154
ACC	37%	32%	67%	63%	64%	66%	60%	42%		28%						
Breed	+0.6	+0.7	+1.5	+17	+26	+32	+33	+5	-0.5	+0.3	+0.2	+0.1	+0.2	+51	+103	+132

5


**ELRIZA VASITY****EE1414**

Gebore: 2014/09/28

 **L MEYER,PRIVAATSAK X 1532 SUITE 554 KURUMAN 8460**

**(55)**

Kalwings: 2  
 17/06/05 18/12/19


 **Vader: MCS0884 CONGOSIM BOSVAS**  
 JVW9820 OLINTIE BOSLUIS  
 MCS0148 CONGOSIM VASTI 6DE \*\*\*

TKP: 562

Simdeks: 79


Kuddeboek: SP

Reg. Status: REG

 **Moeder: EE119 ELRIZA JUNITY**  
 IP0845 NAWINA GRANAAT 2DE

Simdeks: 58

TKP: 58

 EE083 ELRIZA JUNE


Moeder Kalwings: 14/09/28

2019	CED	CEM	BW	WW	YW	FW	MCW	Milk	DtC	SS	EMA	IMF%	RBY%	SFL	SGF	TS
EBV	-1.7	-1.4	+2.2	+15	+23	+32	+37	+5	--	+0.1	--	--	--	+18	+53	+112
ACC	36%	31%	67%	43%	42%	44%	44%	36%		25%						
Breed	+0.6	+0.7	+1.5	+17	+26	+32	+33	+5	-0.5	+0.3	+0.2	+0.1	+0.2	+51	+103	+132

6


**RIVERVALLEY Angel (AI)****AB1481**

Gebore: 2014/12/30

 **PA ABRAHAMSE, P O BOX 263336 THREE RIVERS 1935**

**(52)**

Kalwings: 3  
 17/03/11 18/02/07 19/02/07

 **Vader: E09139 ERICO BRUSSOUW**  
 E07116 ERICO E07116  
 E07137 ERICO E07137

TKP: 349

Simdeks: 109

Kuddeboek: SP

Reg. Status: REG

 **Moeder: AB0726 RIVERVALLEY ABBY**  
 MS9450 KYKSO KALHEI

Simdeks: 106

TKP: 364

 AB0520 RIVERVALLEY AMETTE 3 \*\*\*

Moeder Kalwings: 09/11/22 11/01/05 11/12/18 12/11/22 14/02/22 14/12/30 15/11/10

2019	CED	CEM	BW	WW	YW	FW	MCW	Milk	DtC	SS	EMA	IMF%	RBY%	SFL	SGF	TS
EBV	+3.7	-0.3	+2.4	+17	+26	+42	+46	-1	-1.4	+0.0	-1.1	+0.2	-0.4	+23	+95	+127
ACC	55%	50%	72%	62%	62%	63%	61%	55%	35%	48%	34%	38%	42%			
Breed	+0.6	+0.7	+1.5	+17	+26	+32	+33	+5	-0.5	+0.3	+0.2	+0.1	+0.2	+51	+103	+132

1<sup>ste</sup> \_\_\_\_\_2<sup>de</sup> \_\_\_\_\_3<sup>de</sup> \_\_\_\_\_4<sup>de</sup> \_\_\_\_\_5<sup>de</sup> \_\_\_\_\_6<sup>de</sup> \_\_\_\_\_**KLAS 10: Koei droog, 4 – 6 jaar.**

GEEN INSKRYWINGS / NO ENTRIES

1<sup>ste</sup> \_\_\_\_\_2<sup>de</sup> \_\_\_\_\_3<sup>de</sup> \_\_\_\_\_4<sup>de</sup> \_\_\_\_\_5<sup>de</sup> \_\_\_\_\_6<sup>de</sup> \_\_\_\_\_

**KLAS 11: Koei in melk, 3 – 4 jaar.**

GEEN INSKRYWINGS / NO ENTRIES

1<sup>ste</sup> \_\_\_\_\_

2<sup>de</sup> \_\_\_\_\_

3<sup>de</sup> \_\_\_\_\_

4<sup>de</sup> \_\_\_\_\_

5<sup>de</sup> \_\_\_\_\_

6<sup>de</sup> \_\_\_\_\_

**KLAS 12: Koei droog, 3 – 4 jaar.**

GEEN INSKRYWINGS / NO ENTRIES

1<sup>ste</sup> \_\_\_\_\_

2<sup>de</sup> \_\_\_\_\_

3<sup>de</sup> \_\_\_\_\_

4<sup>de</sup> \_\_\_\_\_

5<sup>de</sup> \_\_\_\_\_

6<sup>de</sup> \_\_\_\_\_

**KLAS 13: SUPERKOEI VAN DIE SKOU** (indien minimum van 5 koeie by skou) –  
Beoordeling geskied op grond van Simdeks (70%) en voorkoms (30%). Alle koeie met  
drie en meer kalwings wat deur die beoordelaars gepunt word, word in berekening  
gebring. Aborsies en/of doodgebore kalwers tel nie vir die Superkoei klas nie.

 **SUPERKOEI VAN DIE SKOU** ♀

(uit klasse 7 – 12)

\_\_\_\_\_

 **SENIOR KAMPIOEN** ♀

(uit klasse 7 – 12)

\_\_\_\_\_

 **RESERWE SENIOR KAMPIOEN** ♀

(uit klasse 7 – 12)

\_\_\_\_\_

## KLAS 14: Koei in melk, 30 – 36 maande.

7

### RIVERVALLEY Janet (AI) (TW)

**AB1641**

Gebore: 2016/06/01

PA ABRAHAMSE, P O BOX 263336 THREE RIVERS 1935

(35)

Kalwings: 1  
18/11/18

♂ Vader: PJO134 TAAIBOSSPRUIT EENDRACHT  
BW1071 BOSWALD 71/10 EXCALIBER  
PJO03208 TAAIBOSSPRUIT ERNA 2 \*

TKP:  
Simdeks: 101  
Kuddeboek: SP  
Reg. Status: REG

♀ Moeder: AB0621 RIVERVALLEY JODIE  
MS94104 KYKSO KALGER  
Simdeks: 95  
TKP: 399  
AB039 RIVERVALLEY JADE 2

Moeder Kalwings: 08/11/12 09/10/20 10/09/10 11/07/31 12/09/07 13/08/30 15/02/15 16/06/01 17/04/27 18/09/08

2019	CED	CEM	BW	WW	YW	FW	MCW	Milk	DtC	SS	EMA	IMF%	RBY%	SFL	SGF	TS
EBV	+11.2	+1.9	-0.3	+11	+16	+18	+7	+2	--	+0.5	--	--	--	+88	+113	+129
ACC	44%	39%	70%	55%	55%	56%	55%	43%		27%						
Breed	+0.6	+0.7	+1.5	+17	+26	+32	+33	+5	-0.5	+0.3	+0.2	+0.1	+0.2	+51	+103	+132

8

### MILAGRO MINETTE 1640

**ACM1640**

Gebore: 2016/07/15

ANDREW MASTERSON FAMILY TRUST, P O BOX 117 HUMANSDORP 6300

(33)

Kalwings: 1  
19/01/17

♂ Vader: ACM1331 MILAGRO MARSHALL 1331  
PN07147 LEEUPOORT BRITS  
ACM083 MILAGRO SUZI 083 \*\*

TKP:  
Simdeks: 100  
Kuddeboek: SP  
Reg. Status: REG

♀ Moeder: ACM1034 MILAGRO MINETTE 1034  
CMO0273 RU-DEV STAAL  
Simdeks: 95  
TKP: 381  
MCS0160 CONGOSIM MINETTE E2

Moeder Kalwings: 13/06/17 14/06/19 15/09/01 16/07/15 17/07/29 18/09/03

2019	CED	CEM	BW	WW	YW	FW	MCW	Milk	DtC	SS	EMA	IMF%	RBY%	SFL	SGF	TS
EBV	-4.7	-4.7	+2.2	+22	+31	+37	+49	+4	--	+0.5	--	--	--	+16	+86	+124
ACC	38%	33%	68%	60%	56%	57%	55%	43%		28%						
Breed	+0.6	+0.7	+1.5	+17	+26	+32	+33	+5	-0.5	+0.3	+0.2	+0.1	+0.2	+51	+103	+132

9

### MILAGRO MANDY 1650 (TW)

**ACM1650**

Gebore: 2016/07/31

ANDREW MASTERSON FAMILY TRUST, P O BOX 117 HUMANSDORP 6300

(33)

Kalwings: 1  
19/01/17

♂ Vader: ACM1331 MILAGRO MARSHALL 1331  
PN07147 LEEUPOORT BRITS  
ACM083 MILAGRO SUZI 083 \*\*

TKP:  
Simdeks: 101  
Kuddeboek: SP  
Reg. Status: REG

♀ Moeder: GH0213 BLENHEIM 0213 \*\*\*  
JFB9919 BULK-EN-BRUL MARLOE 5  
Simdeks: 86  
TKP: 453  
TR9316 LEKKERLYF TR9316 \*\*\*

Moeder Kalwings: 04/03/15 05/05/17 06/06/16 07/08/11 09/02/25 10/05/10 11/03/24 11/07/21(FI) 12/04/21 13/03/03 14/02/27 14/10/29 14/1

2019	CED	CEM	BW	WW	YW	FW	MCW	Milk	DtC	SS	EMA	IMF%	RBY%	SFL	SGF	TS
EBV	-5.4	-2.2	+3.3	+29	+42	+58	+64	+9	--	+0.5	--	--	--	+39	+129	+181
ACC	39%	34%	65%	58%	56%	56%	54%	46%		29%						
Breed	+0.6	+0.7	+1.5	+17	+26	+32	+33	+5	-0.5	+0.3	+0.2	+0.1	+0.2	+51	+103	+132

1<sup>ste</sup> \_\_\_\_\_

2<sup>de</sup> \_\_\_\_\_

3<sup>de</sup> \_\_\_\_\_

4<sup>de</sup> \_\_\_\_\_

5<sup>de</sup> \_\_\_\_\_

6<sup>de</sup> \_\_\_\_\_

**KLAS 15: Koei (droog) of vers, 30 – 36 maande.**

10

**STANSIM ECCIE**

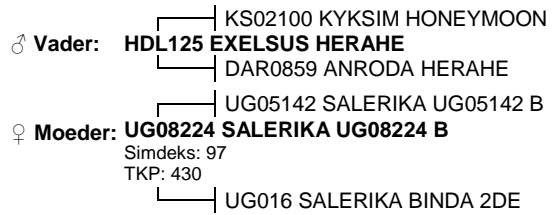
**CSS16234**

Gebore: 2016/07/23

▲ STANSIM SIMMENTALERS, POSBUS 1581 FAERIE GLEN 0043

(33)

Kalwings:



TKP:

Simdeks:

Kuddeboek: SP

Reg. Status: REG

Moeder Kalwings: 10/09/04 11/09/09 13/03/18 14/05/08 15/03/29 16/07/23

2019	CED	CEM	BW	WW	YW	FW	MCW	Milk	DtC	SS	EMA	IMF%	RBV%	SFL	SGF	TS
EBV	-0.1	+1.1	+1.1	+12	+20	+22	+19	+3	--	--	--	--	--	+53	+82	+105
ACC	34%	28%	67%	46%	46%	48%	48%	38%								
Breed	+0.6	+0.7	+1.5	+17	+26	+32	+33	+5	-0.5	+0.3	+0.2	+0.1	+0.2	+51	+103	+132

11

**STANSIM HOUSTIE**

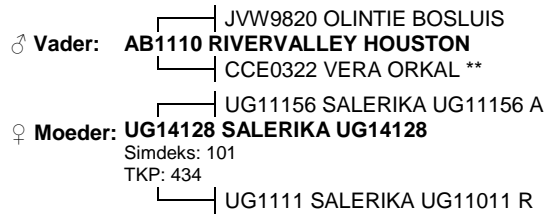
**CSS16289**

Gebore: 2016/10/14

▲ STANSIM SIMMENTALERS, POSBUS 1581 FAERIE GLEN 0043

(30)

Kalwings:



TKP:

Simdeks:

Kuddeboek: SP

Reg. Status: REG

Moeder Kalwings: 16/10/14 17/11/20 19/03/01

2019	CED	CEM	BW	WW	YW	FW	MCW	Milk	DtC	SS	EMA	IMF%	RBV%	SFL	SGF	TS
EBV	+0.0	-0.6	+2.6	+19	+32	+39	+41	+6	--	+0.3	--	--	--	+60	+107	+171
ACC	37%	32%	67%	46%	46%	47%	46%	35%		31%						
Breed	+0.6	+0.7	+1.5	+17	+26	+32	+33	+5	-0.5	+0.3	+0.2	+0.1	+0.2	+51	+103	+132

1<sup>ste</sup> \_\_\_\_\_

2<sup>de</sup> \_\_\_\_\_

3<sup>de</sup> \_\_\_\_\_

4<sup>de</sup> \_\_\_\_\_

5<sup>de</sup> \_\_\_\_\_

6<sup>de</sup> \_\_\_\_\_

**KLAS 16: Koei in melk, 24 - 30 maande.**

12

**RIVERVALLEY Amari (AI)**

**AB16109**

Gebore: 2016/11/23

▲ PA ABRAHAMSE, P O BOX 263336 THREE RIVERS 1935

(29)

Kalwings: 1  
19/02/11



TKP:

Simdeks: 111

Kuddeboek: SP

Reg. Status: REG

Moeder Kalwings: 07/11/12 08/12/09 09/11/12 10/11/19 11/12/20 13/01/04 13/11/22 14/11/02 16/01/05 16/11/23 18/04/15

2019	CED	CEM	BW	WW	YW	FW	MCW	Milk	DtC	SS	EMA	IMF%	RBV%	SFL	SGF	TS
EBV	-4.7	+2.2	+3.4	+21	+32	+44	+38	+4	-2.5	+1.9	-0.6	--	+0.3	+69	+152	+139
ACC	48%	40%	73%	60%	60%	61%	59%	46%	32%	47%	33%		37%			
Breed	+0.6	+0.7	+1.5	+17	+26	+32	+33	+5	-0.5	+0.3	+0.2	+0.1	+0.2	+51	+103	+132

1<sup>ste</sup> \_\_\_\_\_

2<sup>de</sup> \_\_\_\_\_

3<sup>de</sup> \_\_\_\_\_

4<sup>de</sup> \_\_\_\_\_

5<sup>de</sup> \_\_\_\_\_

6<sup>de</sup> \_\_\_\_\_



**KLAS 17: Koei (droog) of vers, 24 – 30 maande.**

13

**STANSIM ROSIEL**

**CSS16255**

Gebore: 2016/11/13

▲ STANSIM SIMMENTALERS, POSBUS 1581 FAERIE GLEN 0043

(29)

Kalwings:

♂ Vader: CSS1247 STANSIM ROOILEEU  
 PN07147 LEEUPOORT BRITS  
 CSS083 STANSIM SIMONE

TKP:

Simdeks:

Kuddeboek: SP

Reg. Status: REG

♀ Moeder: UG1417 H SALERIKA UG1417 H  
 UG11156 SALERIKA UG11156 A  
 Simdeks: 95  
 TKP: 372  
 MCS077 CONGOSIM HEXLY

Moeder Kalwings: 16/11/13 17/11/20

2019	CED	CEM	BW	WW	YW	FW	MCW	Milk	DtC	SS	EMA	IMF%	RBY%	SFL	SGF	TS
EBV	-0.5	-0.6	+1.6	+16	+22	+26	+22	+3	--	+0.3	--	--	--	+47	+90	+100
ACC	38%	32%	67%	46%	45%	48%	47%	35%		27%						
Breed	+0.6	+0.7	+1.5	+17	+26	+32	+33	+5	-0.5	+0.3	+0.2	+0.1	+0.2	+51	+103	+132

14

**STANSIM ANHABHOUSIE**

**CSS1712**

Gebore: 2017/04/28

▲ STANSIM SIMMENTALERS, POSBUS 1581 FAERIE GLEN 0043

(24)

Kalwings:

♂ Vader: AB1110 RIVERVALLEY HOUSTON  
 JWV9820 OLINTIE BOSLUIS  
 CCE0322 VERA ORKAL \*\*

TKP:

Simdeks:

Kuddeboek: SP

Reg. Status: REG

♀ Moeder: CSS0970 STANSIM HONEYANHAB  
 KS02100 KYKSIM HONEYMOON  
 Simdeks: 103  
 TKP: 394  
 KS0354 KYKSIM ANHAB

Moeder Kalwings: 10/11/12 11/11/01 12/09/03 13/08/12 14/08/13 15/09/29 15/09/30 15/10/05 15/12/10 17/04/28 18/09/15 18/09/18 18/09/21

2019	CED	CEM	BW	WW	YW	FW	MCW	Milk	DtC	SS	EMA	IMF%	RBY%	SFL	SGF	TS
EBV	-2.2	-1.1	+2.5	+16	+26	+30	+33	+4	--	+0.0	--	--	--	+35	+63	+127
ACC	41%	36%	67%	51%	51%	52%	50%	42%		32%						
Breed	+0.6	+0.7	+1.5	+17	+26	+32	+33	+5	-0.5	+0.3	+0.2	+0.1	+0.2	+51	+103	+132

1<sup>ste</sup> \_\_\_\_\_

2<sup>de</sup> \_\_\_\_\_

3<sup>de</sup> \_\_\_\_\_

4<sup>de</sup> \_\_\_\_\_

5<sup>de</sup> \_\_\_\_\_

6<sup>de</sup> \_\_\_\_\_

**KLAS 18: Koei, 21 - 24 maande.**

GEEN INSKRYWINGS / NO ENTRIES

1<sup>ste</sup> \_\_\_\_\_

2<sup>de</sup> \_\_\_\_\_

3<sup>de</sup> \_\_\_\_\_

4<sup>de</sup> \_\_\_\_\_

5<sup>de</sup> \_\_\_\_\_

6<sup>de</sup> \_\_\_\_\_

**KLAS 19: Vers, 21 - 24 maande.**

15

**HUGHES HONEYBEE**

**WH1720**

Gebore: 2017/05/23

▲ LEGACY TRUST, PO BOX 29897 DANHOF 9310

(23)

Kalwings:

♂ **Vader:** UG1266 **SALERIKA UG1266 M**  
 UG09205 SALERIKA BILLIARD  
 CO0710 BAR 5 S.A. MARY

♀ **Moeder:** CSS0817 **STANSIM HONEY ERPE**  
 Simdeks: 68  
 TKP: 558  
 KS02100 KYKSIM HONEYMOON  
 KS0259 KYKSIM ERPBA

TKP:

Simdeks:

Kuddeboek: SP

Reg. Status: REG

Moeder Kalwings: 11/04/14 12/03/16 13/03/21 14/01/26 14/05/22(FI) 17/05/23

2019	CED	CEM	BW	WW	YW	FW	MCW	Milk	DtC	SS	EMA	IMF%	RBY%	SFL	SGF	TS
EBV	-1.5	+0.6	+2.3	+17	+26	+26	+30	+4	--	--	--	--	--	--	--	--
ACC	33%	30%	52%	47%	46%	47%	45%	36%								
Breed	+0.6	+0.7	+1.5	+17	+26	+32	+33	+5	-0.5	+0.3	+0.2	+0.1	+0.2	+51	+103	+132

16

**HUGHES RAGEL**

**WH1740**

Gebore: 2017/06/25

▲ LEGACY TRUST, PO BOX 29897 DANHOF 9310

(22)

Kalwings:

♂ **Vader:** UG1266 **SALERIKA UG1266 M**  
 UG09205 SALERIKA BILLIARD  
 CO0710 BAR 5 S.A. MARY

♀ **Moeder:** E0984 **ERICO E0984**  
 Simdeks: 80  
 TKP: 536  
 E0723 ERICO E0723  
 E0050 ERICO NIMLIRED

TKP:

Simdeks:

Kuddeboek: SP

Reg. Status: REG

Moeder Kalwings: 11/08/15 12/10/10 13/10/03 14/11/13 17/06/25

2019	CED	CEM	BW	WW	YW	FW	MCW	Milk	DtC	SS	EMA	IMF%	RBY%	SFL	SGF	TS
EBV																
ACC																
Breed																

1<sup>ste</sup> \_\_\_\_\_ 2<sup>de</sup> \_\_\_\_\_ 3<sup>de</sup> \_\_\_\_\_  
 4<sup>de</sup> \_\_\_\_\_ 5<sup>de</sup> \_\_\_\_\_ 6<sup>de</sup> \_\_\_\_\_

**KLAS 20: Vers, 18 – 21 maande.**

17

**STANSIM QUEENS**

**CSS1721**

Gebore: 2017/08/02

▲ STANSIM SIMMENTALERS, POSBUS 1581 FAERIE GLEN 0043

(20)

Kalwings:

♂ **Vader:** AB1110 **RIVERVALLEY HOUSTON**  
 JVV9820 OLINTIE BOSLUIS  
 CCE0322 VERA ORKAL \*\*

♀ **Moeder:** CSS13346 **STANSIM QUENNIE**  
 Simdeks: 88  
 TKP: 485  
 SDJ0886 AI-AI SAREL  
 CSS10225 STANSIM QUEENIE

TKP:

Simdeks:

Kuddeboek: SP

Reg. Status: REG

Moeder Kalwings: 16/02/05 17/08/02 18/10/02

2019	CED	CEM	BW	WW	YW	FW	MCW	Milk	DtC	SS	EMA	IMF%	RBY%	SFL	SGF	TS
EBV	-3.3	-0.7	+2.6	+16	+27	+32	+33	+5	--	+0.3	--	--	--	+37	+71	+125
ACC	37%	32%	69%	48%	47%	49%	47%	36%		30%						
Breed	+0.6	+0.7	+1.5	+17	+26	+32	+33	+5	-0.5	+0.3	+0.2	+0.1	+0.2	+51	+103	+132

18

**STANSIM MAXIE****CSS1756**

Gebore: 2017/08/27

♠ STANSIM SIMMENTALERS, POSBUS 1581 FAERIE GLEN 0043

**(20)**

Kalwings:

♂ Vader: **CSS1515 STANSIM BIGMAC**  
 AB1110 RIVERVALLEY HOUSTON  
 IP0643 NAWINA KARLA

♀ Moeder: **CSS1524 STANSIM NAPRASIE**  
 Simdeks: 99  
 TKP: 424  
 E08150 ERICO NAPRA  
 CSS121 STANSIM JENNATJIE

Moeder Kalwings: 17/08/27 18/10/25

2019	CED	CEM	BW	WW	YW	FW	MCW	Milk	DtC	SS	EMA	IMF%	RBY%	SFL	SGF	TS
EBV	-1.7	+0.4	+1.9	+13	+19	+27	+32	+3	--	-0.1	--	--	--	+11	+49	+84
ACC	33%	28%	63%	41%	40%	42%	42%	31%		25%						
Breed	+0.6	+0.7	+1.5	+17	+26	+32	+33	+5	-0.5	+0.3	+0.2	+0.1	+0.2	+51	+103	+132

19

**STANSIM HONEY****CSS1762**

Gebore: 2017/10/01

♠ STANSIM SIMMENTALERS, POSBUS 1581 FAERIE GLEN 0043

**(19)**

Kalwings:

♂ Vader: **HDL125 EXELSUS HERAHE**  
 KS02100 KYKSIM HONEYMOON  
 DAR0859 ANRODA HERAHE

♀ Moeder: **UG1484 SALERIKA UG1484 B**  
 Simdeks: 105  
 TKP: 396  
 UG11156 SALERIKA UG11156 A  
 UG08224 SALERIKA UG08224 B

Moeder Kalwings: 16/06/21 17/10/01 18/08/21

2019	CED	CEM	BW	WW	YW	FW	MCW	Milk	DtC	SS	EMA	IMF%	RBY%	SFL	SGF	TS
EBV	-0.6	+1.6	+1.6	+15	+23	+26	+24	+3	--	--	--	--	--	+59	+93	+121
ACC	32%	26%	65%	40%	40%	42%	42%	32%								
Breed	+0.6	+0.7	+1.5	+17	+26	+32	+33	+5	-0.5	+0.3	+0.2	+0.1	+0.2	+51	+103	+132

20

**HUGHES WH1749****WH1749**

Gebore: 2017/10/10

♠ LEGACY TRUST, PO BOX 29897 DANHOF 9310

**(18)**

Kalwings:

♂ Vader: **UG1266 SALERIKA UG1266 M**  
 UG09205 SALERIKA BILLIARD  
 CO0710 BAR 5 S.A. MARY

♀ Moeder: **JV122 ALVOS ANSA**  
 Simdeks: 57  
 TKP: 883  
 AGR1028 JAHDAL ELRICO  
 E0984 ERICO E0984

Moeder Kalwings: 14/10/24(FI) 15/05/11 17/10/10

2019	CED	CEM	BW	WW	YW	FW	MCW	Milk	DtC	SS	EMA	IMF%	RBY%	SFL	SGF	TS
EBV	-1.0	--	+2.2	+16	+24	+26	+31	+4	--	--	--	--	--	--	--	--
ACC	28%		44%	41%	40%	41%	38%	29%								
Breed	+0.6	+0.7	+1.5	+17	+26	+32	+33	+5	-0.5	+0.3	+0.2	+0.1	+0.2	+51	+103	+132

21

**HUGHES WH1758****WH1758**

Gebore: 2017/11/01

♠ LEGACY TRUST, PO BOX 29897 DANHOF 9310

**(18)**

Kalwings:

♂ Vader: **UG1266 SALERIKA UG1266 M**  
 UG09205 SALERIKA BILLIARD  
 CO0710 BAR 5 S.A. MARY

♀ Moeder: **UG13241 SALERIKA UG13241 A**  
 Simdeks: 86  
 TKP: 727  
 LP0937 ALIDOR BEN  
 UG09196 SALERIKA UG09196 A (P)

Moeder Kalwings: 15/11/05 17/11/01

2019	CED	CEM	BW	WW	YW	FW	MCW	Milk	DtC	SS	EMA	IMF%	RBY%	SFL	SGF	TS
EBV																
ACC																
Breed																

1<sup>ste</sup> \_\_\_\_\_2<sup>de</sup> \_\_\_\_\_3<sup>de</sup> \_\_\_\_\_4<sup>de</sup> \_\_\_\_\_5<sup>de</sup> \_\_\_\_\_6<sup>de</sup> \_\_\_\_\_

**KLAS 21: Vers, 15 – 18 maande.**

22

**DEOMIKA EVA**

**DMS171107**

Gebore: 2017/11/07

▲ L MEYER,PRIVAATSAK X 1532 SUITE 554 KURUMAN 8460

(17)

Kalwings:

♂ **Vader:** **BW13131 BOSWALD PIETERS**  
 BW10117 BOSWALD PINOCCHIO 117/10  
 DM9731 ELDANDI GEZMI \*\*  
 ♀ **Moeder:** **EE139 ELRIZA HANNA**  
 PN09492 LEEUPOORT BERG  
 Simdeks: 78  
 TKP: 560  
 UG0245 SALERIKA HADA \*\*

TKP:

Simdeks:

Kuddeboek: SP

Reg. Status: CBK

Moeder Kalwings: 15/10/26 17/11/07 18/11/18

2019	CED	CEM	BW	WW	YW	FW	MCW	Milk	DtC	SS	EMA	IMF%	RBY%	SFL	SGF	TS
EBV	-2.1	+0.0	+2.5	+21	+35	+42	+43	+5	--	+0.5	--	--	--	+52	+111	+157
ACC	31%	27%	50%	55%	56%	54%	50%	35%		27%						
Breed	+0.6	+0.7	+1.5	+17	+26	+32	+33	+5	-0.5	+0.3	+0.2	+0.1	+0.2	+51	+103	+132

23

**DEOMIKA LOUGRETA**

**DMS171108**

Gebore: 2017/11/08

▲ L MEYER,PRIVAATSAK X 1532 SUITE 554 KURUMAN 8460

(17)

Kalwings:

♂ **Vader:** **PN12619 LEEUPOORT TSAR**  
 PN1026 LEEUPOORT KONING  
 PN08244 LEEUPOORT BOESCHI  
 ♀ **Moeder:** **PN15472 LEEUPOORT PN15472**  
 PN12179 LEEUPOORT LOUBSER  
 Simdeks: 105  
 TKP: 454  
 MCS068 CONGOSIM GRETA 2DE \*

TKP:

Simdeks:

Kuddeboek: SP

Reg. Status: CBK

Moeder Kalwings: 17/11/08 19/02/05

2019	CED	CEM	BW	WW	YW	FW	MCW	Milk	DtC	SS	EMA	IMF%	RBY%	SFL	SGF	TS
EBV	-3.7	-1.1	+2.2	+15	+20	+27	+23	+4	--	+0.5	--	--	--	+33	+78	+80
ACC	35%	26%	65%	55%	56%	54%	52%	30%		27%						
Breed	+0.6	+0.7	+1.5	+17	+26	+32	+33	+5	-0.5	+0.3	+0.2	+0.1	+0.2	+51	+103	+132

1<sup>ste</sup> \_\_\_\_\_ 2<sup>de</sup> \_\_\_\_\_ 3<sup>de</sup> \_\_\_\_\_  
 4<sup>de</sup> \_\_\_\_\_ 5<sup>de</sup> \_\_\_\_\_ 6<sup>de</sup> \_\_\_\_\_

**KLAS 22: Vers, 12 – 15 maande.**

24

**STANSIM QUEEN OF ALL**

**CSS18507**

Gebore: 2018/02/27

▲ STANSIM SIMMENTALERS, POSBUS 1581 FAERIE GLEN 0043

(14)

Kalwings:

♂ **Vader:** **CSS1247 STANSIM ROOILEEU**  
 PN07147 LEEUPOORT BRITS  
 CSS083 STANSIM SIMONE  
 ♀ **Moeder:** **CSS13213 STANSIM SANTJIES**  
 SDJ0886 AI-AI SAREL  
 Simdeks: 92  
 TKP: 448  
 WM0526 WYMAR BLOSSOM (P)

TKP:

Simdeks:

Kuddeboek: SP

Reg. Status: CBK

Moeder Kalwings: 15/09/15 16/09/05 16/11/14(FI) 18/02/27

2019	CED	CEM	BW	WW	YW	FW	MCW	Milk	DtC	SS	EMA	IMF%	RBY%	SFL	SGF	TS
EBV	-5.1	-0.4	+2.3	+19	+27	+31	+36	+5	--	+0.5	--	--	--	+24	+83	+98
ACC	38%	33%	65%	49%	47%	49%	47%	35%		27%						
Breed	+0.6	+0.7	+1.5	+17	+26	+32	+33	+5	-0.5	+0.3	+0.2	+0.1	+0.2	+51	+103	+132

25

**DEOMIKA BRITNEY****DMS182**

Gebore: 2018/03/28

♀ L MEYER,PRIVAATSAK X 1532 SUITE 554 KURUMAN 8460

**(13)**

Kalwings:

♂ Vader: PN12619 LEEUPOORT TSAR  
 PN1026 LEEUPOORT KONING  
 PN08244 LEEUPOORT BOESCHI

♀ Moeder: PN15233 LEEUPOORT PN15233  
 Simdeks: 101  
 TKP:  
 PN07475 LEEUPOORT BRITTIG  
 PN10691 LEEUPOORT HATTINGH

TKP:

Simdeks:

Kuddeboek: SP

Reg. Status: CBK

Moeder Kalwings: 18/03/28

2019	CED	CEM	BW	WW	YW	FW	MCW	Milk	DtC	SS	EMA	IMF%	RBV%	SFL	SGF	TS
EBV	-2.6	-0.2	+1.9	+16	+25	+30	+31	+4	--	--	--	--	--	+37	+82	+109
ACC	36%	28%	57%	40%	39%	41%	40%	30%								
Breed	+0.6	+0.7	+1.5	+17	+26	+32	+33	+5	-0.5	+0.3	+0.2	+0.1	+0.2	+51	+103	+132

1<sup>ste</sup> \_\_\_\_\_ 2<sup>de</sup> \_\_\_\_\_ 3<sup>de</sup> \_\_\_\_\_  
 4<sup>de</sup> \_\_\_\_\_ 5<sup>de</sup> \_\_\_\_\_ 6<sup>de</sup> \_\_\_\_\_

**KLAS 23: Vers, 9 – 12 maande.**

26

**HUGHES WH1811****WH1811**

Gebore: 2018/06/23

♀ LEGACY TRUST, PO BOX 29897 DANHOF 9310

**(10)**

Kalwings:

♂ Vader: WH1514 HUGHES 1514  
 UG0938 SALERIKA BRANDER  
 CE04111 SIMLEE MELBA \*\*\*

♀ Moeder: WH146 HUGHES WH146  
 UG11140 SALERIKA ESRON (P)  
 Simdeks: 77  
 TKP: 582  
 UG1110 SALERIKA UG11010 B

TKP:

Simdeks:

Kuddeboek: SP

Reg. Status: REG

Moeder Kalwings: 15/10/21 16/11/18 18/06/23

2019	CED	CEM	BW	WW	YW	FW	MCW	Milk	DtC	SS	EMA	IMF%	RBV%	SFL	SGF	TS
EBV	-3.1	+0.8	+2.9	+22	+39	+51	+51	+3	--	--	--	--	--	+85	+172	+198
ACC	29%	26%	44%	39%	38%	39%	37%	31%								
Breed	+0.6	+0.7	+1.5	+17	+26	+32	+33	+5	-0.5	+0.3	+0.2	+0.1	+0.2	+51	+103	+132

1<sup>ste</sup> \_\_\_\_\_ 2<sup>de</sup> \_\_\_\_\_ 3<sup>de</sup> \_\_\_\_\_  
 4<sup>de</sup> \_\_\_\_\_ 5<sup>de</sup> \_\_\_\_\_ 6<sup>de</sup> \_\_\_\_\_

27

**RIVERVALLEY FRANCES (AI)****AB1874**

Gebore: 2018/07/08

♀ PA ABRAHAMSE, P O BOX 263336 THREE RIVERS 1935

**(9)**

Kalwings:

♂ Vader: PN12406 LEEUPOORT PHELPS  
 PN087 LEEUPOORT ATLAS  
 PN03117 LEEUPOORT BETSIE \*\*\*

♀ Moeder: AB148 RIVERVALLEY Farah  
 E09139 ERICO BRUSSOUW  
 Simdeks: 104  
 TKP: 335  
 AB0816 RIVERVALLEY FIBI

TKP:

Simdeks:

Kuddeboek: SP

Reg. Status: CBK

Moeder Kalwings: 16/09/06 17/08/09 18/07/08

2019	CED	CEM	BW	WW	YW	FW	MCW	Milk	DtC	SS	EMA	IMF%	RBV%	SFL	SGF	TS
EBV	+3.0	-0.2	+1.6	+15	+24	+28	+30	+2	--	+0.3	+0.1	--	+0.0	+44	+81	+128
ACC	42%	34%	70%	55%	54%	56%	53%	37%		41%	29%		35%			
Breed	+0.6	+0.7	+1.5	+17	+26	+32	+33	+5	-0.5	+0.3	+0.2	+0.1	+0.2	+51	+103	+132

**KALFKAMPIOEN VERS** ♀  
(Uit klasse 21 - 23)

**RESERWE KALFKAMPIOEN VERS** ♀  
(Uit klasse 21 - 23)

**JUNIOR KAMPIOEN** ♀  
(Uit klasse 14 - 23)

**RESERWE JUNIOR KAMPIOEN** ♀  
(Uit klasse 14 - 23)

**GROOT KAMPIOEN** ♀  
(Jnr + Res Jnr Kamp & Snr + Res Snr Kamp)

**RESERWE GROOT KAMPIOEN** ♀  
(Jnr + Res Jnr Kamp & Snr + Res Snr Kamp)

**KLAS 24:** Bul, ouer as 4 jaar (net van toepassing by Inter / Nasionale Skoue of op versoek)

28

**HUGHES WH1510 (ET)**

♣ LEGACY TRUST, PO BOX 29897 DANHOF 9310

Kalwings: -

TKP: -

Simdeks: -

Kuddeboek: SP

Reg. Status: CBK

**WH1510**

Gebore: 2015/02/20

(50)

♂ Vader: UG0627 SALERIKA JOCK  
UG0938 SALERIKA BRANDER  
UG0534 SALERIKA UG0534 B  
UG0054 SALERIKA BAKEN  
♀ Moeder: CE04111 SIMLEE MELBA \*\*\*  
Simdeks: 69  
TKP: 553  
CE004 SIMLEE MELBIE \*\*\*

Moeder Kalwings: 06/11/20 08/04/30 09/05/21 10/05/31 11/04/14 12/05/03 13/04/20 14/05/22(FI) 15/02/20 15/02/21 17/06/24

2019	CED	CEM	BW	WW	YW	FW	MCW	Milk	DtC	SS	EMA	IMF%	RBV%	SFL	SGF	TS
EBV	-4.2	+0.9	+2.9	+21	+39	+51	+50	+1	-1.1	+1.4	+1.5	+0.1	+0.8	--	--	--
ACC	49%	44%	62%	60%	59%	58%	57%	53%	38%	42%	39%	43%	45%			
Breed	+0.6	+0.7	+1.5	+17	+26	+32	+33	+5	-0.5	+0.3	+0.2	+0.1	+0.2	+51	+103	+132

29

**HUGHES 1514 (ET)**

♣ LEGACY TRUST, PO BOX 29897 DANHOF 9310

Kalwings: -

TKP: -

Simdeks: -

Kuddeboek: SP

Reg. Status: REG

**WH1514**

Gebore: 2015/02/21

(50)

♂ Vader: UG0627 SALERIKA JOCK  
UG0938 SALERIKA BRANDER  
UG0534 SALERIKA UG0534 B  
UG0054 SALERIKA BAKEN  
♀ Moeder: CE04111 SIMLEE MELBA \*\*\*  
Simdeks: 69  
TKP: 553  
CE004 SIMLEE MELBIE \*\*\*

Moeder Kalwings: 06/11/20 08/04/30 09/05/21 10/05/31 11/04/14 12/05/03 13/04/20 14/05/22(FI) 15/02/20 15/02/21 17/06/24

2019	CED	CEM	BW	WW	YW	FW	MCW	Milk	DtC	SS	EMA	IMF%	RBV%	SFL	SGF	TS
EBV	-4.2	+0.9	+2.9	+21	+39	+51	+50	+1	-1.1	+1.4	+1.5	+0.1	+0.8	+84	+168	+195
ACC	49%	44%	62%	60%	59%	58%	57%	53%	38%	42%	39%	43%	45%			
Breed	+0.6	+0.7	+1.5	+17	+26	+32	+33	+5	-0.5	+0.3	+0.2	+0.1	+0.2	+51	+103	+132

30

**STANSIM BIGMAC****CSS1515**

Gebore: 2015/03/03

♀ STANSIM SIMMENTALERS, POSBUS 1581 FAERIE GLEN 0043

**(49)**

Kalwings: -

♂ Vader: **AB1110 RIVERVALLEY HOUSTON**  
 JVV9820 OLINTIE BOSLUIS  
 CCE0322 VERA ORKAL \*\*

TKP: -

Simdeks: -

Kuddeboek: SP

Reg. Status: REG

♀ Moeder: **IP0643 NAWINA KARLA**  
 LAT021 LATCO HAGER JUNIOR  
 Simdeks: 85  
 TKP: 458  
 IP0315 NAWINA KARLIEN 2DE

Moeder Kalwings: 08/10/10 09/09/23 10/09/30 12/11/27 13/10/11 15/03/03 16/04/19

2019	CED	CEM	BW	WW	YW	FW	MCW	Milk	DtC	SS	EMA	IMF%	RBY%	SFL	SGF	TS
EBV	-3.3	-0.4	+3.0	+14	+24	+32	+38	+4	--	+0.4	+0.4	+0.1	+0.2	+16	+55	+108
ACC	48%	39%	83%	54%	54%	56%	56%	42%		37%	22%	20%	24%			
Breed	+0.6	+0.7	+1.5	+17	+26	+32	+33	+5	-0.5	+0.3	+0.2	+0.1	+0.2	+51	+103	+132

31

**TENDELE LN15067(P)****LN1567**

Gebore: 2015/04/14

♀ TENDELE FARMS TRUST, POSBUS 73 SENEKAL 9600

**(48)**

Kalwings: -

♂ Vader: **UG12144 SALERIKA BUURMAN**  
 UG10123 SALERIKA MILO (P)  
 UG09187 SALERIKA UG09187 B

TKP: -

Simdeks: -

Kuddeboek: SP

Reg. Status: REG

♀ Moeder: **UG139 SALERIKA UG139 B**  
 GD1010 RANEPID COENIE  
 Simdeks: 108  
 TKP: 354  
 UG1078 SALERIKA UG10078 B

Moeder Kalwings: 15/04/14 16/03/23 17/03/05 18/02/24 19/02/26

2019	CED	CEM	BW	WW	YW	FW	MCW	Milk	DtC	SS	EMA	IMF%	RBY%	SFL	SGF	TS
EBV	+0.1	+3.6	-0.6	+11	+12	+9	-15	+5	-4.7	+1.8	-0.7	+0.1	+0.0	+106	+145	+56
ACC	66%	50%	85%	76%	75%	75%	71%	43%	38%	68%	45%	43%	50%			
Breed	+0.6	+0.7	+1.5	+17	+26	+32	+33	+5	-0.5	+0.3	+0.2	+0.1	+0.2	+51	+103	+132

1<sup>ste</sup> \_\_\_\_\_2<sup>de</sup> \_\_\_\_\_3<sup>de</sup> \_\_\_\_\_4<sup>de</sup> \_\_\_\_\_5<sup>de</sup> \_\_\_\_\_6<sup>de</sup> \_\_\_\_\_**KLAS 25: Bul, 3 – 4 jaar.**

32

**GULLAND NEBEUS****MAD15122**

Gebore: 2015/10/02

♀ L MEYER, PRIVAATSAK X 1532 SUITE 554 KURUMAN 8460

**(42)**

Kalwings: -

♂ Vader: **SC1259 JORS TRASTIN**  
 DJA094 ELLI'S ENDRICUS (ET)  
 SC056 JORS LEA

TKP: -

Simdeks: -

Kuddeboek: SP

Reg. Status: REG

♀ Moeder: **MAD066 GULLAND NEBEN**  
 KM0125 KWANTUM BEN  
 Simdeks: 87  
 TKP: 413  
 CMO9897 RU-DEV NINA \*\*\*

Moeder Kalwings: 08/11/12 09/11/01 10/11/07 11/10/28 13/02/02 14/08/29 15/10/02 16/11/14 17/11/28

2019	CED	CEM	BW	WW	YW	FW	MCW	Milk	DtC	SS	EMA	IMF%	RBY%	SFL	SGF	TS
EBV	+1.4	-3.7	+0.8	+22	+34	+38	+43	+8	--	+0.1	--	--	--	+56	+118	+169
ACC	46%	39%	73%	51%	49%	51%	50%	40%		26%						
Breed	+0.6	+0.7	+1.5	+17	+26	+32	+33	+5	-0.5	+0.3	+0.2	+0.1	+0.2	+51	+103	+132

33

**TENDELE RENO****LN1643**

Gebore: 2016/03/11

♀ TENDELE FARMS TRUST, POSBUS 73 SENEKAL 9600

**(37)**

Kalwings: -

♂ Vader: **UG11209 SALERIKA BRAVO**  
 UG07186 SALERIKA KAROB (P)  
 UG07191 SALERIKA UG07191 B \*\*

TKP: -

Simdeks: -

Kuddeboek: SP

Reg. Status: REG

♀ Moeder: **ASM121 ASMER RENE 23 P**  
 ASM0811 ASMER CARROP (P)  
 Simdeks: 105  
 TKP: 371  
 ASM0528 ASMER RENE 8

Moeder Kalwings: 14/02/27 15/03/25 16/03/11 17/03/06 18/03/20

2019	CED	CEM	BW	WW	YW	FW	MCW	Milk	DtC	SS	EMA	IMF%	RBY%	SFL	SGF	TS
EBV	-0.8	+1.2	+2.1	+26	+45	+50	+65	+1	-1.2	+0.7	+0.3	-0.1	+0.5	+76	+172	+224
ACC	51%	42%	81%	68%	69%	67%	65%	47%	37%	71%	47%	45%	51%			
Breed	+0.6	+0.7	+1.5	+17	+26	+32	+33	+5	-0.5	+0.3	+0.2	+0.1	+0.2	+51	+103	+132

34

**RIVERVALLEY Mischief (AI)****AB1621**

Gebore: 2016/04/20

♠ PA ABRAHAMSE, P O BOX 263336 THREE RIVERS 1935

**(36)**

Kalwings: -

♂ Vader: PJO134 TAAIBOSSPRUIT EENDRACHT  
BW1071 BOSWALD 71/10 EXCALIBER  
PJO03208 TAAIBOSSPRUIT ERNA 2 \*

TKP: -

Simdeks: -

Kuddeboek: SP

Reg. Status: REG

♀ Moeder: AB1246 RIVERVALLEY FAITH

Simdeks: 96

TKP: 424

JME1013 JACMI HANRU  
AB108 RIVERVALLEY FIONA

Moeder Kalwings: 14/11/15 16/04/20 17/02/28 18/05/08

2019	CED	CEM	BW	WW	YW	FW	MCW	Milk	DtC	SS	EMA	IMF%	RBY%	SFL	SGF	TS
EBV	+4.8	+2.7	+1.4	+23	+33	+43	+42	+7	--	+0.3	--	--	--	+76	+126	+191
ACC	39%	34%	70%	53%	53%	54%	52%	38%		25%						
Breed	+0.6	+0.7	+1.5	+17	+26	+32	+33	+5	-0.5	+0.3	+0.2	+0.1	+0.2	+51	+103	+132

35

**RIVERVALLEY Maseru (AI)****AB1629**

Gebore: 2016/04/30

♠ PA ABRAHAMSE, P O BOX 263336 THREE RIVERS 1935

**(36)**

Kalwings: -

♂ Vader: UG12144 SALERIKA BUURMAN  
UG10123 SALERIKA MILO (P)  
UG09187 SALERIKA UG09187 B

TKP: -

Simdeks: -

Kuddeboek: SP

Reg. Status: REG

♀ Moeder: AB1355 RIVERVALLEY Unika

Simdeks: 96

TKP: 376

E09139 ERICO BRUSSOUW  
AB1010 RIVERVALLEY UNITY

Moeder Kalwings: 16/04/30 17/05/02 18/05/21

2019	CED	CEM	BW	WW	YW	FW	MCW	Milk	DtC	SS	EMA	IMF%	RBY%	SFL	SGF	TS
EBV	+2.3	+2.8	+1.0	+15	+22	+27	+21	+0	-2.5	+1.1	-0.7	+0.0	-0.1	+68	+124	+110
ACC	48%	42%	67%	57%	57%	58%	55%	42%	33%	48%	34%	36%	40%			
Breed	+0.6	+0.7	+1.5	+17	+26	+32	+33	+5	-0.5	+0.3	+0.2	+0.1	+0.2	+51	+103	+132

1<sup>ste</sup> \_\_\_\_\_2<sup>de</sup> \_\_\_\_\_3<sup>de</sup> \_\_\_\_\_4<sup>de</sup> \_\_\_\_\_5<sup>de</sup> \_\_\_\_\_6<sup>de</sup> \_\_\_\_\_

🏆 SENIOR KAMPIOEN ♂

(uit klasse 24 &amp; 25)

🏆 RESERWE SENIOR KAMPIOEN ♂

(uit klasse 24 &amp; 25)

**KLAS 26:** Bul, 32 – 36 maande.

36

**RIVERVALLEY Mazda (AI)****AB1654**

Gebore: 2016/06/20

♠ PA ABRAHAMSE, P O BOX 263336 THREE RIVERS 1935

**(34)**

Kalwings: -

♂ Vader: PJO134 TAAIBOSSPRUIT EENDRACHT  
BW1071 BOSWALD 71/10 EXCALIBER  
PJO03208 TAAIBOSSPRUIT ERNA 2 \*

TKP: -

Simdeks: -

Kuddeboek: SP

Reg. Status: REG

♀ Moeder: AB1016 RIVERVALLEY ZETA

Simdeks: 104

TKP: 376

CO03817 BAR 5 S.A. PIONA 04 817N  
CBE0110 FRANSIM ZENMI \*\*\*

Moeder Kalwings: 12/09/02 13/11/01 14/08/17(Ab) 15/08/04 16/06/20 17/10/23

2019	CED	CEM	BW	WW	YW	FW	MCW	Milk	DtC	SS	EMA	IMF%	RBY%	SFL	SGF	TS
EBV	+4.6	+3.9	+1.3	+16	+26	+32	+28	+6	--	+0.3	--	--	--	+77	+114	+158
ACC	41%	36%	70%	52%	51%	52%	51%	39%		27%						
Breed	+0.6	+0.7	+1.5	+17	+26	+32	+33	+5	-0.5	+0.3	+0.2	+0.1	+0.2	+51	+103	+132



37

**MILAGRO PREMIER 1644E (AI) (ET) ACM1644**

Gebore: 2016/07/21

♠ ANDREW MASTERSON FAMILY TRUST, P O BOX 117 HUMANSDORP 6300

**(33)**

Kalwings: -

♂ **Vader:** UG11209 SALERIKA BRAVO  
 UG07186 SALERIKA KAROB (P)  
 UG07191 SALERIKA UG07191 B \*\*

♀ **Moeder:** ACM1428 MILAGRO SANDRA 1428  
 ACM1115 MILAGRO KALLIS 1115  
 Simdeks: 105  
 TKP: 328  
 ACM0935 MILAGRO SANDRA 0935

TKP: -

Simdeks: -

Kuddeboek: SP

Reg. Status: REG

Moeder Kalwings: 16/07/20 16/07/21 16/09/28 17/08/26 18/07/15

2019	CED	CEM	BW	WW	YW	FW	MCW	Milk	DtC	SS	EMA	IMF%	RBY%	SFL	SGF	TS
EBV	-2.9	+0.3	+2.5	+22	+33	+37	+48	-1	-1.7	+1.2	+0.2	+0.1	+0.4	+55	+138	+156
ACC	47%	40%	66%	59%	59%	59%	56%	44%	35%	47%	34%	37%	40%			
Breed	+0.6	+0.7	+1.5	+17	+26	+32	+33	+5	-0.5	+0.3	+0.2	+0.1	+0.2	+51	+103	+132

38

**ASHTONVALE ENOS****AH1633**

Gebore: 2016/08/10

♠ ABRAHAM EN NIEL VAN HEERDEN, ASHTONVALE POSBUS 701 BETHLEHEM 9700

**(32)**

Kalwings: -

♂ **Vader:** AH1033 ASHTONVALE SAMPIE  
 DJA0433 ELLI'S PAKER  
 AH0156 ASHTONVALE IMANZI \*\*\*

♀ **Moeder:** AH1156 ASHTONVALE TESS  
 BTB0674 BTB DORMAN  
 Simdeks: 92  
 TKP: 419  
 AH0722 ASHTONVALE ONA \*\*

TKP: -

Simdeks: -

Kuddeboek: SP

Reg. Status: REG

Moeder Kalwings: 14/01/26 14/12/18 16/08/10 17/08/14 18/08/27

2019	CED	CEM	BW	WW	YW	FW	MCW	Milk	DtC	SS	EMA	IMF%	RBY%	SFL	SGF	TS
EBV	+2.4	+2.4	+1.4	+21	+33	+38	+50	+10	--	+0.0	--	--	--	+55	+128	+171
ACC	39%	33%	72%	66%	67%	68%	62%	41%		38%						
Breed	+0.6	+0.7	+1.5	+17	+26	+32	+33	+5	-0.5	+0.3	+0.2	+0.1	+0.2	+51	+103	+132

39

**TENDELE LN16174****LN16174**

Gebore: 2016/09/01

♠ TENDELE FARMS TRUST, POSBUS 73 SENEKAL 9600

**(32)**

Kalwings: -

♂ **Vader:** LN1347 TENDELE TOPPER  
 NV1037 VON-ADEL TOPPIE  
 LN1089 TENDELE LN1089

♀ **Moeder:** JAD1152 DEO-VOLENTE GERKA 4DE  
 IP0760 NAWINA ELZAR  
 Simdeks: 102  
 TKP: 362  
 BTB0552 SCHOEMANSFONTEIN GERKA \*\*

TKP: -

Simdeks: -

Kuddeboek: SP

Reg. Status: REG

Moeder Kalwings: 13/09/11 14/09/03 15/09/25 16/09/01

2019	CED	CEM	BW	WW	YW	FW	MCW	Milk	DtC	SS	EMA	IMF%	RBY%	SFL	SGF	TS
EBV	+4.1	-1.3	+0.9	+19	+34	+40	+55	+3	--	+0.2	+0.6	+0.1	+0.4	+47	+107	+191
ACC	37%	32%	70%	60%	61%	60%	57%	36%		60%	35%	31%	39%			
Breed	+0.6	+0.7	+1.5	+17	+26	+32	+33	+5	-0.5	+0.3	+0.2	+0.1	+0.2	+51	+103	+132

1<sup>ste</sup> \_\_\_\_\_2<sup>de</sup> \_\_\_\_\_3<sup>de</sup> \_\_\_\_\_4<sup>de</sup> \_\_\_\_\_5<sup>de</sup> \_\_\_\_\_6<sup>de</sup> \_\_\_\_\_

**KLAS 27: Bul, 28 – 32 maande.**

40

**ASHTONVALE EMIEL**

**AH1676**

Gebore: 2016/09/07

▲ ABRAHAM EN NIEL VAN HEERDEN, ASHTONVALE POSBUS 701 BETHLEHEM 9700

(31)

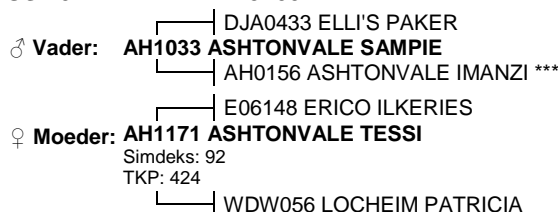
Kalwings: -

TKP: -

Simdeks: -

Kuddeboek: SP

Reg. Status: REG



Moeder Kalwings: 14/01/13 14/12/27 16/09/07 17/09/27 18/09/05

2019	CED	CEM	BW	WW	YW	FW	MCW	Milk	DtC	SS	EMA	IMF%	RBY%	SFL	SGF	TS
EBV	+1.5	+0.6	+1.6	+25	+37	+49	+60	+6	--	+0.5	--	--	--	+50	+137	+184
ACC	38%	32%	72%	66%	67%	67%	62%	41%		36%						
Breed	+0.6	+0.7	+1.5	+17	+26	+32	+33	+5	-0.5	+0.3	+0.2	+0.1	+0.2	+51	+103	+132

41

**BTB LIZTON PP (AI)**

**BTB1642**

Gebore: 2016/10/14

▲ BOEKENHOUT TRUST, POSBUS 1223 KLERKSDORP 2570

(30)

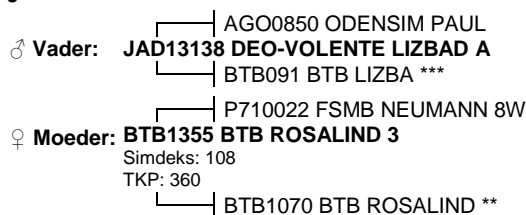
Kalwings: -

TKP: -

Simdeks: -

Kuddeboek: SP

Reg. Status: REG



Moeder Kalwings: 15/11/22 16/10/14 17/10/28 18/11/06

2019	CED	CEM	BW	WW	YW	FW	MCW	Milk	DtC	SS	EMA	IMF%	RBY%	SFL	SGF	TS
EBV	+1.8	+2.5	+1.9	+22	+39	+46	+55	+9	-2.9	+1.9	-0.2	-0.2	+0.0	+79	+184	+192
ACC	48%	37%	77%	68%	69%	67%	64%	39%	31%	70%	45%	46%	52%			
Breed	+0.6	+0.7	+1.5	+17	+26	+32	+33	+5	-0.5	+0.3	+0.2	+0.1	+0.2	+51	+103	+132

42

**ASHTONVALE EGBERT**

**AH16115**

Gebore: 2016/10/17

▲ ABRAHAM EN NIEL VAN HEERDEN, ASHTONVALE POSBUS 701 BETHLEHEM 9700

(30)

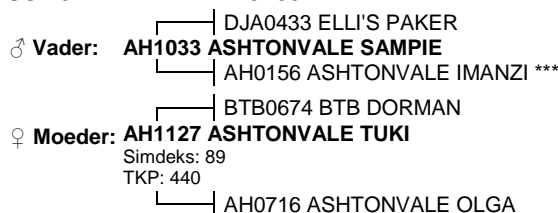
Kalwings: -

TKP: -

Simdeks: -

Kuddeboek: SP

Reg. Status: REG



Moeder Kalwings: 14/01/17 15/10/21 16/10/17 17/11/21 18/11/09

2019	CED	CEM	BW	WW	YW	FW	MCW	Milk	DtC	SS	EMA	IMF%	RBY%	SFL	SGF	TS
EBV	+2.0	+1.3	+1.9	+24	+36	+45	+57	+8	--	+0.1	--	--	--	+56	+139	+187
ACC	39%	33%	71%	65%	65%	63%	59%	41%		39%						
Breed	+0.6	+0.7	+1.5	+17	+26	+32	+33	+5	-0.5	+0.3	+0.2	+0.1	+0.2	+51	+103	+132

43

**HUGHES WH1617**

**WH1617**

Gebore: 2016/11/18

▲ LEGACY TRUST, PO BOX 29897 DANHOF 9310

(29)

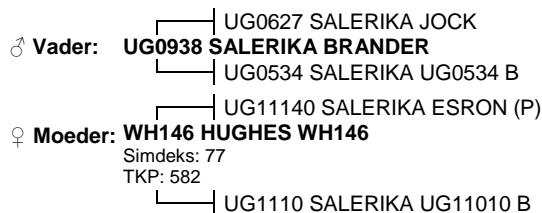
Kalwings: -

TKP: -

Simdeks: -

Kuddeboek: SP

Reg. Status: REG



Moeder Kalwings: 15/10/21 16/11/18 18/06/23

2019	CED	CEM	BW	WW	YW	FW	MCW	Milk	DtC	SS	EMA	IMF%	RBY%	SFL	SGF	TS
EBV	-3.7	+1.2	+3.1	+22	+40	+51	+49	+0	-1.4	+1.3	+1.6	-0.1	+1.0	--	--	--
ACC	41%	36%	57%	53%	53%	53%	51%	42%	32%	34%	35%	39%	41%			
Breed	+0.6	+0.7	+1.5	+17	+26	+32	+33	+5	-0.5	+0.3	+0.2	+0.1	+0.2	+51	+103	+132

44

**HUGHES WH1623**

♠ LEGACY TRUST, PO BOX 29897 DANHOF 9310

**WH1623**

Gebore: 2016/12/20  
(28)

Kalwings: -

TKP: -

Simdeks: -

Kuddeboek: SP

Reg. Status: REG

♂ Vader: UG09205 SALERIKA BILLIARD  
UG1266 SALERIKA UG1266 M  
CO0710 BAR 5 S.A. MARY

♀ Moeder: UG057 SALERIKA BAROC  
UG07243 SALERIKA UG07243 Z  
Simdeks: 79  
TKP: 486  
UG05135 SALERIKA UG05135 Z

Moeder Kalwings: 10/04/30 11/03/27 12/03/25 13/03/19 14/02/15 15/05/14 16/12/20 18/12/09

2019	CED	CEM	BW	WW	YW	FW	MCW	Milk	DtC	SS	EMA	IMF%	RBY%	SFL	SGF	TS
EBV	-0.7	+2.6	+1.9	+20	+31	+34	+38	+3	-0.1	+0.4	+1.4	--	+0.2	--	--	--
ACC	34%	29%	53%	50%	50%	51%	49%	39%	30%	26%	28%		35%			
Breed	+0.6	+0.7	+1.5	+17	+26	+32	+33	+5	-0.5	+0.3	+0.2	+0.1	+0.2	+51	+103	+132

1<sup>ste</sup> \_\_\_\_\_ 2<sup>de</sup> \_\_\_\_\_ 3<sup>de</sup> \_\_\_\_\_  
4<sup>de</sup> \_\_\_\_\_ 5<sup>de</sup> \_\_\_\_\_ 6<sup>de</sup> \_\_\_\_\_

**KLAS 28: Bul, 24 – 28 maande.**

45

**TENDELE REEVO LN1735**

♠ TENDELE FARMS TRUST, POSBUS 73 SENEKAL 9600

**LN1735**

Gebore: 2017/03/06  
(25)

Kalwings: -

TKP: -

Simdeks: -

Kuddeboek: SP

Reg. Status: REG

♂ Vader: UG07186 SALERIKA KAROB (P)  
UG11209 SALERIKA BRAVO  
UG07191 SALERIKA UG07191 B \*\*

♀ Moeder: ASM0811 ASMER CARROP (P)  
ASM121 ASMER RENE 23 P  
Simdeks: 105  
TKP: 371  
ASM0528 ASMER RENE 8

Moeder Kalwings: 14/02/27 15/03/25 16/03/11 17/03/06 18/03/20

2019	CED	CEM	BW	WW	YW	FW	MCW	Milk	DtC	SS	EMA	IMF%	RBY%	SFL	SGF	TS
EBV	-0.7	+1.2	+2.3	+27	+48	+56	+72	+1	-1.5	+1.1	+0.1	+0.0	+0.5	+78	+189	+238
ACC	47%	40%	72%	68%	69%	71%	65%	47%	37%	71%	47%	45%	52%			
Breed	+0.6	+0.7	+1.5	+17	+26	+32	+33	+5	-0.5	+0.3	+0.2	+0.1	+0.2	+51	+103	+132

1<sup>ste</sup> \_\_\_\_\_ 2<sup>de</sup> \_\_\_\_\_ 3<sup>de</sup> \_\_\_\_\_  
4<sup>de</sup> \_\_\_\_\_ 5<sup>de</sup> \_\_\_\_\_ 6<sup>de</sup> \_\_\_\_\_

**KLAS 29: Bul, 21 – 24 maande.**

46

**ELRIZA PLUTO**

♠ L MEYER,PRIVAATSAK X 1532 SUITE 554 KURUMAN 8460

**EE178**

Gebore: 2017/05/02  
(23)

Kalwings: -

TKP: -

Simdeks: -

Kuddeboek: SP

Reg. Status: REG

♂ Vader: BW10117 BOSWALD PINOCCHIO 117/10  
BW13131 BOSWALD PIETERS  
DM9731 ELDANDI GEZMI \*\*

♀ Moeder: MCS0884 CONGOSIM BOSVAS  
EE1413 ELRIZA LIEFLING  
Simdeks: 71  
TKP: 618  
EE1012 ELRIZA LOVE-U

Moeder Kalwings: 17/05/02 19/01/10

2019	CED	CEM	BW	WW	YW	FW	MCW	Milk	DtC	SS	EMA	IMF%	RBY%	SFL	SGF	TS
EBV	-2.7	-0.3	+2.4	+18	+28	+36	+39	+6	--	+0.4	--	--	--	+32	+82	+125
ACC	31%	27%	46%	40%	40%	41%	39%	32%		25%						
Breed	+0.6	+0.7	+1.5	+17	+26	+32	+33	+5	-0.5	+0.3	+0.2	+0.1	+0.2	+51	+103	+132

47

**MILAGRO QUAD 1710****ACM1710**

Gebore: 2017/05/24

♠ ANDREW MASTERSON FAMILY TRUST, P O BOX 117 HUMANSDORP 6300

**(23)**

Kalwings: -

♂ Vader: **ACM1230 MILAGRO LARRY 1230**  
 CO03817 BAR 5 S.A. PIONA 04 817N  
 ACM062 MILAGRO CLAUDINE 602

♀ Moeder: **ACM1251 MILAGRO STELLA 1251**  
 ACM1016 MILAGRO JABULANI 1016  
 Simdeks: 98  
 TKP: 401  
 MCS0247 CONGOSIM STELLAT 2DE

Moeder Kalwings: 15/03/24 16/05/04 17/05/24 18/07/08

2019	CED	CEM	BW	WW	YW	FW	MCW	Milk	DtC	SS	EMA	IMF%	RBV%	SFL	SGF	TS
EBV	+4.0	+4.0	+0.2	+15	+24	+29	+29	+1	--	+0.0	--	--	--	+64	+103	+140
ACC	36%	31%	63%	60%	56%	56%	54%	41%		26%						
Breed	+0.6	+0.7	+1.5	+17	+26	+32	+33	+5	-0.5	+0.3	+0.2	+0.1	+0.2	+51	+103	+132

48

**ASHTONVALE Ferdi****AH172**

Gebore: 2017/07/23

♠ ABRAHAM EN NIEL VAN HEERDEN, ASHTONVALE POSBUS 701 BETHLEHEM 9700

**(21)**

Kalwings: -

♂ Vader: **RJB1387 WALKRAAL EVERT**  
 GH0782 BLENHEIM BALDI  
 FE0634 FRANMARI KARINA 3DE

♀ Moeder: **AH1511 ASHTONVALE DOT**  
 PR0917 WILSUNEL MEAN (P)  
 Simdeks: 99  
 TKP:  
 AH0731 ASHTONVALE OENIE

Moeder Kalwings: 17/07/23

2019	CED	CEM	BW	WW	YW	FW	MCW	Milk	DtC	SS	EMA	IMF%	RBV%	SFL	SGF	TS
EBV	+2.3	+2.1	+0.9	+19	+29	+30	+38	+7	--	+0.0	--	--	--	+45	+90	+143
ACC	34%	29%	65%	63%	65%	65%	59%	34%		35%						
Breed	+0.6	+0.7	+1.5	+17	+26	+32	+33	+5	-0.5	+0.3	+0.2	+0.1	+0.2	+51	+103	+132

49

**STANSIM BIG CHAMP (TW)****CSS1717**

Gebore: 2017/07/25

♠ STANSIM SIMMENTALERS, POSBUS 1581 FAERIE GLEN 0043

**(21)**

Kalwings: -

♂ Vader: **CSS1515 STANSIM BIGMAC**  
 AB1110 RIVERVALLEY HOUSTON  
 IPO643 NAWINA KARLA

♀ Moeder: **CSS14447 STANSIM EKSOREX**  
 E09183 ERICO 09183  
 Simdeks: 76  
 TKP: 486  
 WDW0926 LOCHEIM ROBERTA

Moeder Kalwings: 17/07/25 18/11/23

2019	CED	CEM	BW	WW	YW	FW	MCW	Milk	DtC	SS	EMA	IMF%	RBV%	SFL	SGF	TS
EBV	-4.2	-2.4	+3.5	+19	+29	+39	+48	+5	--	+0.5	--	--	--	+13	+74	+122
ACC	32%	26%	65%	42%	40%	42%	42%	30%		23%						
Breed	+0.6	+0.7	+1.5	+17	+26	+32	+33	+5	-0.5	+0.3	+0.2	+0.1	+0.2	+51	+103	+132

50

**TENDELE LN17112****LN17112**

Gebore: 2017/07/31

♠ TENDELE FARMS TRUST, POSBUS 73 SENEKAL 9600

**(21)**

Kalwings: -

♂ Vader: **UG13259 SALERIKA UG13259 A**  
 UG1153 SALERIKA RASCAL (P)  
 UG11145 SALERIKA UG11145 A

♀ Moeder: **LN1493 TENDELE LN1493**  
 SEN0959 SIMMCHRIS BORNIEK  
 Simdeks: 110  
 TKP: 375  
 JPD1064 DE VIL CATTRYN

Moeder Kalwings: 16/08/15 17/07/31 18/09/03

2019	CED	CEM	BW	WW	YW	FW	MCW	Milk	DtC	SS	EMA	IMF%	RBV%	SFL	SGF	TS
EBV	+1.9	+2.4	+2.1	+12	+11	+23	+12	+3	-0.4	-0.2	+1.2	-0.1	+0.4	+44	+62	+77
ACC	38%	29%	70%	64%	66%	64%	60%	35%	31%	66%	41%	39%	47%			
Breed	+0.6	+0.7	+1.5	+17	+26	+32	+33	+5	-0.5	+0.3	+0.2	+0.1	+0.2	+51	+103	+132

1<sup>ste</sup> \_\_\_\_\_2<sup>de</sup> \_\_\_\_\_3<sup>de</sup> \_\_\_\_\_4<sup>de</sup> \_\_\_\_\_5<sup>de</sup> \_\_\_\_\_6<sup>de</sup> \_\_\_\_\_

**51**

**STANSIM ROOILAND**

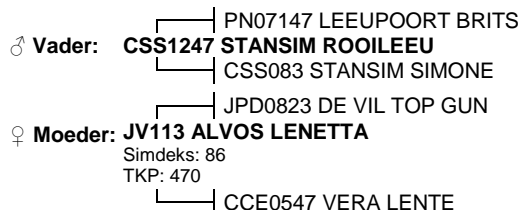
**CSS1735**

Gebore: 2017/08/13

▲ STANSIM SIMMENTALERS, POSBUS 1581 FAERIE GLEN 0043

(20)

Kalwings: -



TKP: -

Simdeks: -

Kuddeboek: SP

Reg. Status: REG

Moeder Kalwings: 13/06/06 14/08/21 15/10/25 17/08/13 18/07/29

2019	CED	CEM	BW	WW	YW	FW	MCW	Milk	DtC	SS	EMA	IMF%	RBY%	SFL	SGF	TS
EBV	-3.3	-2.2	+1.9	+13	+19	+22	+25	+3	--	+0.3	--	+0.2	-0.2	+18	+61	+72
ACC	39%	33%	69%	46%	44%	48%	47%	34%		28%		20%	23%			
Breed	+0.6	+0.7	+1.5	+17	+26	+32	+33	+5	-0.5	+0.3	+0.2	+0.1	+0.2	+51	+103	+132

**52**

**TENDELE BEVIN LN17139**

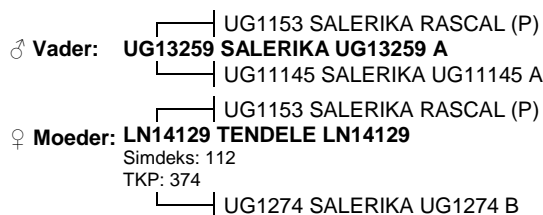
**LN17139**

Gebore: 2017/08/17

▲ TENDELE FARMS TRUST, POSBUS 73 SENEKAL 9600

(20)

Kalwings: -



TKP: -

Simdeks: -

Kuddeboek: SP

Reg. Status: REG

Moeder Kalwings: 16/09/09 17/08/17 18/09/26

2019	CED	CEM	BW	WW	YW	FW	MCW	Milk	DtC	SS	EMA	IMF%	RBY%	SFL	SGF	TS
EBV	+3.7	+4.1	+1.0	+7	+8	+13	-14	+0	+0.1	+0.3	+2.3	-0.2	+0.9	+94	+77	+87
ACC	39%	30%	72%	67%	68%	66%	63%	33%	34%	68%	45%	42%	50%			
Breed	+0.6	+0.7	+1.5	+17	+26	+32	+33	+5	-0.5	+0.3	+0.2	+0.1	+0.2	+51	+103	+132

**53**

**ASHTONVALE FARYN**

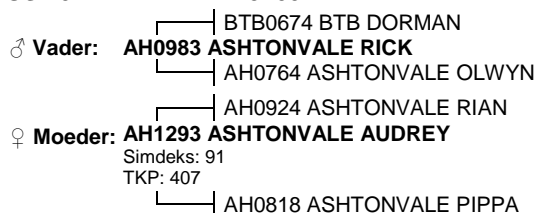
**AH1730**

Gebore: 2017/09/02

▲ ABRAHAM EN NIEL VAN HEERDEN, ASHTONVALE POSBUS 701 BETHLEHEM 9700

(19)

Kalwings: -



TKP: -

Simdeks: -

Kuddeboek: SP

Reg. Status: CBK

Moeder Kalwings: 15/06/02 16/09/04 17/09/02 18/10/03

2019	CED	CEM	BW	WW	YW	FW	MCW	Milk	DtC	SS	EMA	IMF%	RBY%	SFL	SGF	TS
EBV	-1.1	+1.3	+2.5	+23	+34	+46	+49	+12	--	+0.0	--	--	--	+50	+114	+165
ACC	36%	28%	71%	64%	65%	66%	60%	38%		26%						
Breed	+0.6	+0.7	+1.5	+17	+26	+32	+33	+5	-0.5	+0.3	+0.2	+0.1	+0.2	+51	+103	+132

**54**

**TENDELE LN17182**

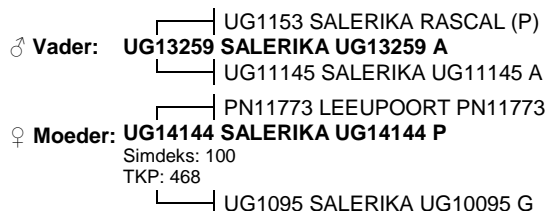
**LN17182**

Gebore: 2017/09/14

▲ TENDELE FARMS TRUST, POSBUS 73 SENEKAL 9600

(19)

Kalwings: -



TKP: -

Simdeks: -

Kuddeboek: SP

Reg. Status: REG

Moeder Kalwings: 16/08/29 17/09/14 19/03/23

2019	CED	CEM	BW	WW	YW	FW	MCW	Milk	DtC	SS	EMA	IMF%	RBY%	SFL	SGF	TS
EBV	+2.4	+3.2	+1.2	+17	+23	+31	+17	+5	+0.2	-0.6	+0.5	-0.2	+0.6	+77	+92	+137
ACC	37%	29%	70%	64%	65%	63%	59%	31%	31%	66%	41%	39%	47%			
Breed	+0.6	+0.7	+1.5	+17	+26	+32	+33	+5	-0.5	+0.3	+0.2	+0.1	+0.2	+51	+103	+132

1<sup>ste</sup> \_\_\_\_\_

2<sup>de</sup> \_\_\_\_\_

3<sup>de</sup> \_\_\_\_\_

4<sup>de</sup> \_\_\_\_\_

5<sup>de</sup> \_\_\_\_\_

6<sup>de</sup> \_\_\_\_\_

**KLAS 31: Bul, 15 – 18 maande.****55****VOORUITZICHT PAUL 1781****JH1781**

Gebore: 2017/11/08

L MEYER,PRIVAATSAK X 1532 SUITE 554 KURUMAN 8460

**(17)**

Kalwings: -

 ♂ **Vader: E13108 ERICO BRONCO**  
 E09139 ERICO BRUSSOUW  
 WK073 ALUDAR JENNIFER

TKP: -

Simdeks: -

Kuddeboek: SP

Reg. Status: CBK

 ♀ **Moeder: UG1063 SALERIKA UG10063 J**  
 UG0644 SALERIKA UTHA
Simdeks: 98  
TKP: 411

UG06146 SALERIKA UG06146 J \*\*\*

Moeder Kalwings: 12/03/18 13/03/12 14/05/17 15/04/22 16/10/21 17/11/08 18/12/14

2019	CED	CEM	BW	WW	YW	FW	MCW	Milk	DtC	SS	EMA	IMF%	RBY%	SFL	SGF	TS
EBV	+1.3	-0.3	+2.1	+14	+25	+34	+36	+3	--	+0.4	-0.5	--	-0.5	+35	+103	+112
ACC	38%	33%	71%	62%	58%	58%	56%	42%		30%	28%		35%			
Breed	+0.6	+0.7	+1.5	+17	+26	+32	+33	+5	-0.5	+0.3	+0.2	+0.1	+0.2	+51	+103	+132

**56****ASHTONVALE Fusi****AH1779**

Gebore: 2017/11/27

ABRAHAM EN NIEL VAN HEERDEN,ASHTONVALE POSBUS 701 BETHLEHEM 9700

**(17)**

Kalwings: -

 ♂ **Vader: AH0962 ASHTONVALE RED**  
 AML047 ANMALU PRINSIE  
 JAJ0113 SIMJOHZANDER HANTIE

TKP: -

Simdeks: -

Kuddeboek: SP

Reg. Status: CBK

 ♀ **Moeder: AH101 ASHTONVALE SABE**  
 BTB0674 BTB DORMAN
Simdeks: 87  
TKP: 453

AH07109 ASHTONVALE ORINE \*

Moeder Kalwings: 12/08/13 14/08/29 15/09/09 16/10/13 17/11/27 18/10/23

2019	CED	CEM	BW	WW	YW	FW	MCW	Milk	DtC	SS	EMA	IMF%	RBY%	SFL	SGF	TS
EBV	-3.7	+1.6	+2.7	+19	+32	+41	+46	+11	--	+0.1	--	--	--	+40	+98	+145
ACC	39%	32%	71%	63%	62%	61%	57%	44%		29%						
Breed	+0.6	+0.7	+1.5	+17	+26	+32	+33	+5	-0.5	+0.3	+0.2	+0.1	+0.2	+51	+103	+132

1<sup>ste</sup> \_\_\_\_\_2<sup>de</sup> \_\_\_\_\_3<sup>de</sup> \_\_\_\_\_4<sup>de</sup> \_\_\_\_\_5<sup>de</sup> \_\_\_\_\_6<sup>de</sup> \_\_\_\_\_**KLAS 32: Bul, 12 – 15 maande.**

GEEN INSKRYWINGS / NO ENTRIES

1<sup>ste</sup> \_\_\_\_\_2<sup>de</sup> \_\_\_\_\_3<sup>de</sup> \_\_\_\_\_4<sup>de</sup> \_\_\_\_\_5<sup>de</sup> \_\_\_\_\_6<sup>de</sup> \_\_\_\_\_**KLAS 33: Bul, 9 – 12 maande.****57****DEOMIKA ADAM****DMS185**

Gebore: 2018/05/21

L MEYER,PRIVAATSAK X 1532 SUITE 554 KURUMAN 8460

**(11)**

Kalwings: -

 ♂ **Vader: PN12619 LEEUPOORT TSAR**  
 PN1026 LEEUPOORT KONING  
 PN08244 LEEUPOORT BOESCHI

TKP: -

Simdeks: -

Kuddeboek: SP

Reg. Status: CBK

 ♀ **Moeder: PN15343 LEEUPOORT PN15343**  
 PN12248 LEEUPOORT PN12248
Simdeks: 96  
TKP:

PN04125 LEEUPOORT GOMIE \*\*\*

Moeder Kalwings: 18/05/21

2019	CED	CEM	BW	WW	YW	FW	MCW	Milk	DtC	SS	EMA	IMF%	RBY%	SFL	SGF	TS
EBV	-2.0	--	+1.9	+15	+23	+30	+31	+5	--	--	--	--	--	+27	+71	+96
ACC	33%		56%	37%	36%	38%	38%	27%								
Breed	+0.6	+0.7	+1.5	+17	+26	+32	+33	+5	-0.5	+0.3	+0.2	+0.1	+0.2	+51	+103	+132

1<sup>ste</sup> \_\_\_\_\_

2<sup>de</sup> \_\_\_\_\_

3<sup>de</sup> \_\_\_\_\_

4<sup>de</sup> \_\_\_\_\_

5<sup>de</sup> \_\_\_\_\_

6<sup>de</sup> \_\_\_\_\_

 **KALFKAMPIOEN BUL** ♂

(Uit klasse 31 - 33)

\_\_\_\_\_

 **RESERWE KALFKAMPIOEN BUL** ♂

(Uit klasse 31 - 33)

\_\_\_\_\_

 **JUNIOR KAMPIOEN** ♂

(Uit klasse 26 – 33)

\_\_\_\_\_

 **RESERWE JUNIOR KAMPIOEN** ♂

(Uit klasse 26 – 33)

\_\_\_\_\_

**KLAS 34: BLUP TEELWAARDE KAMPIOEN** – Die ZOETIS se LANDBOU-  
WEEKBLAD / BREEDPLAN Jong Bul van die Jaar op skoue is deel van 'n Suider Afrikaanse  
kompetisie wat ander skoue ook insluit. Die doelwit is om skoue te gebruik om genetiese  
verbetering vir ekonomiese belangrike eienskappe te promoveer. Alle bulle op skoue met  
beraamde teelwaardes tussen 12-36 maande kwalifiseer. Daar moet ten minste 10 bulle per ras  
wees om te kwalifiseer. Die visuele beoordeling tel 50% van die punte en die vlak van  
rekordhouding asook prestasiedata tel 50%. Standaard kriteria vir alle rasse word gebruik om die  
teelwaardes (geboorte, speen, jaar, finale, volwasse koeigewig en skrotumomtrek) te weeg,  
hoewel sommige rasse verkies om ekonomiese seleksie indekse gebruik. Die kriteria is deur  
kundiges verbonde aan die Universiteit van die Vrystaat tesame met die organiseerders opgestel.  
Die binne-ras wenner ding mee met soortgelyke wenners op ander skoue waarna 'n nasionale  
binne-ras wenner by die Aldam Vleisbeeskool aangekondig word.

 **BLUP TEELWAARDE KAMPIOEN** ♂

(Klas 34)

\_\_\_\_\_

**KLAS 35: Fase C Prestasietoetsklas** – bulle vanaf 12 tot 24 maande.  
Inskrywings tydens skou en onderhewig aan Interrasklasse.

 **FASE C KAMPIOEN** ♂

(Klas 35)

\_\_\_\_\_

 **GROOT KAMPIOEN** ♂

(Jnr + Res Jnr Kamp & Snr + Res Snr Kamp)

\_\_\_\_\_

 **RESERWE GROOT KAMPIOEN** ♂

(Jnr + Res Jnr Kamp & Snr + Res Snr Kamp)

\_\_\_\_\_