

### SKILDERKRANS DN1637

DN1637

Lot. 1

DES NEL, POSBUS 19 BARKLY-OOS 9786 TEL:27795680947

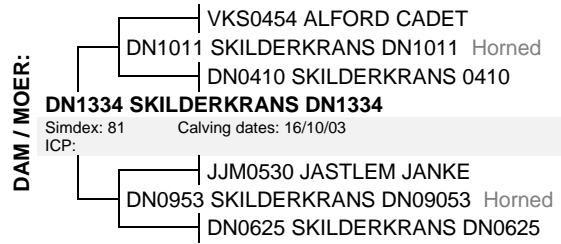
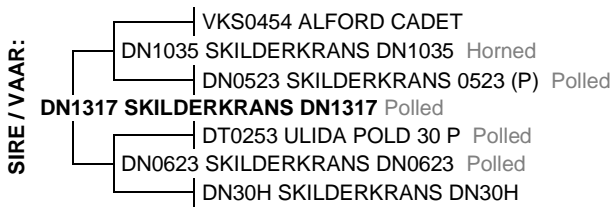
SIMMENTALER

Birth Date: 2016/10/03 DNA:  
Age: 35 months  
Herdbook: SP  
Horn: Polled

Reg. Status: REG  
Inspection Date: 2018/05/25

MALE/MANLIK

Reg. No: 103007662



August 2019 South African Simmentaler GROUP BREEDPLAN

Simmentaler SA - [www.simmentaler.org](http://www.simmentaler.org) / [info@simmentaler.org](mailto:info@simmentaler.org) / 051 446 0580/2

2019	CED	CEM	BW	200	400	600	MCW	MILK	SC	DC	EMA	IMF%	RBY%	SFL	SGF	TS
EBV	--	--	+0.9	+17	+26	+30	+33	+4	--	--	--	--	--	+67	+140	+134
ACC			63%	58%	53%	52%	49%	34%								
BREED	+0.8	+1.0	+1.4	+17	+27	+33	+34	+5	+0.3	-0.5	+0.3	+0.1	+0.2	+56	+110	+138



Seller's remarks / Verkoper se kommentaar:

R

### SKILDERKRANS DN1627

DN1627

Lot. 2

DES NEL, POSBUS 19 BARKLY-OOS 9786 TEL:27795680947

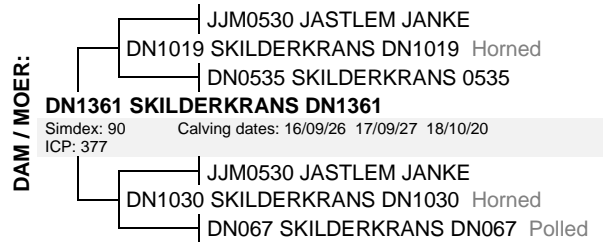
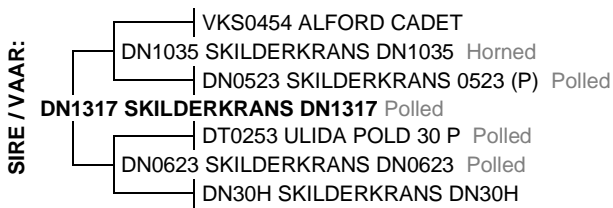
SIMMENTALER

Birth Date: 2016/09/26 DNA:  
Age: 35 months  
Herdbook: SP  
Horn: Polled

Reg. Status: REG  
Inspection Date: 2018/05/25

MALE/MANLIK

Reg. No: 103007563



August 2019 South African Simmentaler GROUP BREEDPLAN

Simmentaler SA - [www.simmentaler.org](http://www.simmentaler.org) / [info@simmentaler.org](mailto:info@simmentaler.org) / 051 446 0580/2

2019	CED	CEM	BW	200	400	600	MCW	MILK	SC	DC	EMA	IMF%	RBY%	SFL	SGF	TS
EBV	+1.7	--	+0.6	+14	+22	+23	+21	+2	--	--	--	--	--	+73	+128	+120
ACC	25%		65%	60%	55%	55%	54%	38%								
BREED	+0.8	+1.0	+1.4	+17	+27	+33	+34	+5	+0.3	-0.5	+0.3	+0.1	+0.2	+56	+110	+138



Seller's remarks / Verkoper se kommentaar:

R

### SKILDERKRANS DN1642

DN1642

Lot. 3

DES NEL, POSBUS 19 BARKLY-OOS 9786 TEL:27795680947

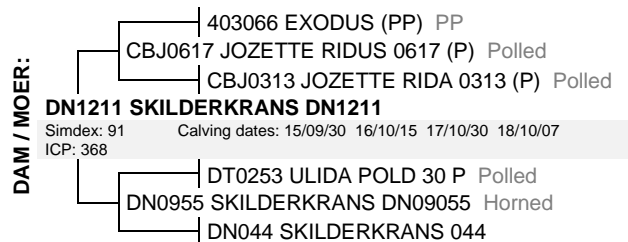
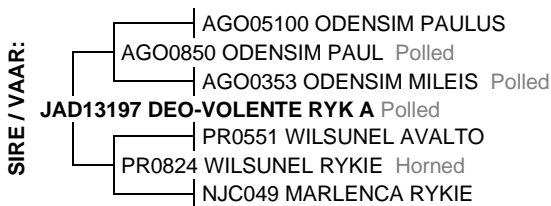
SIMMENTALER

Birth Date: 2016/10/15 DNA:  
Age: 35 months  
Herdbook: SP  
Horn:

Reg. Status: REG  
Inspection Date: 2018/05/25

MALE/MANLIK

Reg. No: 103007712



August 2019 South African Simmentaler GROUP BREEDPLAN

Simmentaler SA - [www.simmentaler.org](http://www.simmentaler.org) / [info@simmentaler.org](mailto:info@simmentaler.org) / 051 446 0580/2

2019	CED	CEM	BW	200	400	600	MCW	MILK	SC	DC	EMA	IMF%	RBY%	SFL	SGF	TS
EBV	-0.6	+1.8	+2.1	+22	+32	+41	+42	+6	+1.1	--	--	--	--	+60	+118	+160
ACC	34%	28%	69%	63%	58%	58%	56%	41%	39%							
BREED	+0.8	+1.0	+1.4	+17	+27	+33	+34	+5	+0.3	-0.5	+0.3	+0.1	+0.2	+56	+110	+138



Seller's remarks / Verkoper se kommentaar:

R

**DEO-VOLENTE RYK A**

**JAD13197**

**Lot. 4**

DES NEL, POSBUS 19 BARKLY-OOS 9786 TEL:27795680947

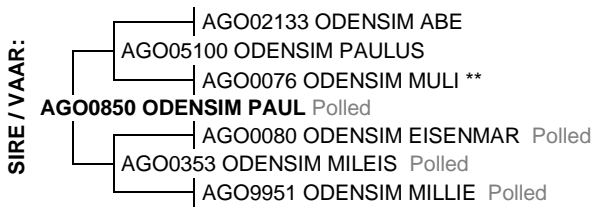
**SIMMENTALER**

Birth Date: 2013/10/14 DNA: 365231 u  
Age: 71 months  
Herdbook: SP  
Horn: Polled

Reg. Status: REG  
Inspection Date: 2015/08/18

**MALE/MANLIK**

Reg. No: 102596285



August 2019 South African Simmentaler GROUP BREEDPLAN

Simmentaler SA - www.simmentaler.org / info@simmentaler.org / 051 446 0580/2

2019	CED	CEM	BW	200	400	600	MCW	MILK	SC	DC	EMA	IMF%	RBY%	SFL	SGF	TS
EBV	+2.2	+4.7	+1.2	+21	+30	+41	+42	+7	+1.4	-0.7	+0.5	--	+0.5	+73	+137	+168
ACC	55%	46%	86%	84%	78%	79%	74%	56%	68%	36%	28%		36%			
BREED	+0.8	+1.0	+1.4	+17	+27	+33	+34	+5	+0.3	-0.5	+0.3	+0.1	+0.2	+56	+110	+138



**Seller's remarks / Verkoper se kommentaar:**

R

**SKILDERKRANS DN1735**

**DN1735**

**Lot. 5**

DES NEL, POSBUS 19 BARKLY-OOS 9786 TEL:27795680947

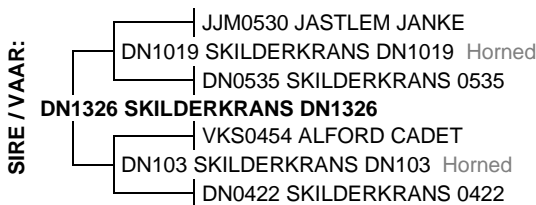
**SIMMENTALER**

Birth Date: 2017/10/11 DNA:  
Age: 23 months  
Herdbook: SP  
Horn:

Reg. Status: REG  
Inspection Date: 2019/05/24

**MALE/MANLIK**

Reg. No: 103129797



August 2019 South African Simmentaler GROUP BREEDPLAN

Simmentaler SA - www.simmentaler.org / info@simmentaler.org / 051 446 0580/2

2019	CED	CEM	BW	200	400	600	MCW	MILK	SC	DC	EMA	IMF%	RBY%	SFL	SGF	TS
EBV	-2.7	-0.9	+1.9	+13	+19	+23	+26	+7	--	--	--	--	--	+37	+91	+88
ACC	33%	24%	70%	63%	58%	57%	55%	41%								
BREED	+0.8	+1.0	+1.4	+17	+27	+33	+34	+5	+0.3	-0.5	+0.3	+0.1	+0.2	+56	+110	+138



**Seller's remarks / Verkoper se kommentaar:**

R

**SKILDERKRANS DN1741**

**DN1741**

**Lot. 6**

DES NEL, POSBUS 19 BARKLY-OOS 9786 TEL:27795680947

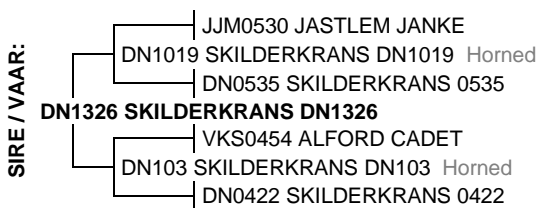
**SIMMENTALER**

Birth Date: 2017/10/18 DNA:  
Age: 23 months  
Herdbook: SP  
Horn:

Reg. Status: REG  
Inspection Date: 2019/05/24

**MALE/MANLIK**

Reg. No: 103129839



August 2019 South African Simmentaler GROUP BREEDPLAN

Simmentaler SA - www.simmentaler.org / info@simmentaler.org / 051 446 0580/2

2019	CED	CEM	BW	200	400	600	MCW	MILK	SC	DC	EMA	IMF%	RBY%	SFL	SGF	TS
EBV	-1.4	+0.4	+1.9	+15	+22	+25	+27	+4	--	--	--	--	--	+52	+113	+104
ACC	32%	22%	70%	63%	57%	57%	54%	42%								
BREED	+0.8	+1.0	+1.4	+17	+27	+33	+34	+5	+0.3	-0.5	+0.3	+0.1	+0.2	+56	+110	+138



**Seller's remarks / Verkoper se kommentaar:**

R

<b>SKILDERKRANS DN178</b>										<b>DN178</b>					<b>Lot. 7</b>	
DES NEL, POSBUS 19 BARKLY-OOS 9786 TEL:27795680947															SIMMENTALER	
Birth Date: 2017/01/27      DNA:					Reg. Status: REG					MALE/MANLIK						
Age: 31 months					Inspection Date: 2018/05/25					Reg. No: 103048807						
Herdbook: SP																
Horn:																
<p><b>SIRE / VAAR:</b></p> <ul style="list-style-type: none"> <li>— AGO05100 ODENSIM PAULUS</li> <li>— AGO0850 ODENSIM PAUL Polled</li> <li>— AGO0353 ODENSIM MILEIS Polled</li> <li>— JAD13197 DEO-VOLENTE RYK A Polled</li> <li>— PR0551 WILSUNEL AVALTO</li> <li>— PR0824 WILSUNEL RYKIE Horned</li> <li>— NJC049 MARLENCA RYKIE</li> </ul>					<p><b>DAM / MOER:</b></p> <ul style="list-style-type: none"> <li>— JJM0530 JASTLEM JANKE</li> <li>— DN1019 SKILDERKRANS DN1019 Horned</li> <li>— DN0535 SKILDERKRANS 0535</li> <li>— DN1412 SKILDERKRANS DN1412</li> <li>— Simdex: 109      Calving dates: 17/01/27 17/12/06</li> <li>— ICP: 313</li> <li>— DN0857 SKILDERKRANS DN08057 Horned</li> <li>— DN1146 SKILDERKRANS DN1146</li> <li>— DN0762 SKILDERKRANS DN07062 Horned</li> </ul>											
August 2019 South African Simmentaler GROUP BREEDPLAN										Simmentaler SA - www.simmentaler.org / info@simmentaler.org / 051 446 0580/2						
2019	CED	CEM	BW	200	400	600	MCW	MILK	SC	DC	EMA	IMF%	RBY%	SFL	SGF	TS
EBV	+1.9	+2.6	+0.8	+16	+24	+31	+30	+4	+0.9	--	--	--	--	+60	+106	+133
ACC	32%	26%	55%	53%	50%	51%	50%	37%	35%							
BREED	+0.8	+1.0	+1.4	+17	+27	+33	+34	+5	+0.3	-0.5	+0.3	+0.1	+0.2	+56	+110	+138
<b>Seller's remarks / Verkoper se kommentaar:</b>										R						

<b>SKILDERKRANS DN1738</b>										<b>DN1738</b>					<b>Lot. 8</b>	
DES NEL, POSBUS 19 BARKLY-OOS 9786 TEL:27795680947															SIMMENTALER	
Birth Date: 2017/10/13      DNA:					Reg. Status: REG					MALE/MANLIK						
Age: 23 months					Inspection Date: 2019/05/24					Reg. No: 103129813						
Herdbook: SP																
Horn:																
<p><b>SIRE / VAAR:</b></p> <ul style="list-style-type: none"> <li>— AGO05100 ODENSIM PAULUS</li> <li>— AGO0850 ODENSIM PAUL Polled</li> <li>— AGO0353 ODENSIM MILEIS Polled</li> <li>— JAD13197 DEO-VOLENTE RYK A Polled</li> <li>— PR0551 WILSUNEL AVALTO</li> <li>— PR0824 WILSUNEL RYKIE Horned</li> <li>— NJC049 MARLENCA RYKIE</li> </ul>					<p><b>DAM / MOER:</b></p> <ul style="list-style-type: none"> <li>— JJM0530 JASTLEM JANKE</li> <li>— DN1019 SKILDERKRANS DN1019 Horned</li> <li>— DN0535 SKILDERKRANS 0535</li> <li>— DN1322 SKILDERKRANS DN1322</li> <li>— Simdex: 56      Calving dates: 17/10/13 18/10/10</li> <li>— ICP: 362</li> <li>— VKS0454 ALFORD CADET</li> <li>— DN0939 SKILDERKRANS DN09039 Horned</li> <li>— DT9877 ULIDA ODELL 95</li> </ul>											
August 2019 South African Simmentaler GROUP BREEDPLAN										Simmentaler SA - www.simmentaler.org / info@simmentaler.org / 051 446 0580/2						
2019	CED	CEM	BW	200	400	600	MCW	MILK	SC	DC	EMA	IMF%	RBY%	SFL	SGF	TS
EBV	+3.0	+2.4	+0.3	+14	+22	+28	+27	+4	+0.9	--	--	--	--	+59	+100	+127
ACC	32%	26%	69%	62%	57%	57%	56%	38%	36%							
BREED	+0.8	+1.0	+1.4	+17	+27	+33	+34	+5	+0.3	-0.5	+0.3	+0.1	+0.2	+56	+110	+138
<b>Seller's remarks / Verkoper se kommentaar:</b>										R						

<b>SKILDERKRANS DN1728</b>										<b>DN1728</b>					<b>Lot. 9</b>	
DES NEL, POSBUS 19 BARKLY-OOS 9786 TEL:27795680947															SIMMENTALER	
Birth Date: 2017/09/17      DNA:					Reg. Status: REG					MALE/MANLIK						
Age: 24 months					Inspection Date: 2019/05/24					Reg. No: 103129748						
Herdbook: SP																
Horn:																
<p><b>SIRE / VAAR:</b></p> <ul style="list-style-type: none"> <li>— JJM0530 JASTLEM JANKE</li> <li>— DN1019 SKILDERKRANS DN1019 Horned</li> <li>— DN0535 SKILDERKRANS 0535</li> <li>— DN1326 SKILDERKRANS DN1326</li> <li>— VKS0454 ALFORD CADET</li> <li>— DN103 SKILDERKRANS DN103 Horned</li> <li>— DN0422 SKILDERKRANS 0422</li> </ul>					<p><b>DAM / MOER:</b></p> <ul style="list-style-type: none"> <li>— VKS0454 ALFORD CADET</li> <li>— DN1011 SKILDERKRANS DN1011 Horned</li> <li>— DN0410 SKILDERKRANS 0410</li> <li>— DN1351 SKILDERKRANS DN1351</li> <li>— Simdex: 91      Calving dates: 16/02/02 17/09/17 18/09/10</li> <li>— ICP: 476</li> <li>— VKS0454 ALFORD CADET</li> <li>— DN0948 SKILDERKRANS DN09048 Horned</li> <li>— DN49H SKILDERKRANS DN49H</li> </ul>											
August 2019 South African Simmentaler GROUP BREEDPLAN										Simmentaler SA - www.simmentaler.org / info@simmentaler.org / 051 446 0580/2						
2019	CED	CEM	BW	200	400	600	MCW	MILK	SC	DC	EMA	IMF%	RBY%	SFL	SGF	TS
EBV	-6.2	--	+2.7	+21	+31	+39	+43	+4	--	--	--	--	--	+53	+144	+132
ACC	29%		69%	61%	55%	55%	52%	34%								
BREED	+0.8	+1.0	+1.4	+17	+27	+33	+34	+5	+0.3	-0.5	+0.3	+0.1	+0.2	+56	+110	+138
<b>Seller's remarks / Verkoper se kommentaar:</b>										R						

**SKILDERKRANS DN1747**

**DN1747**

**Lot. 10**

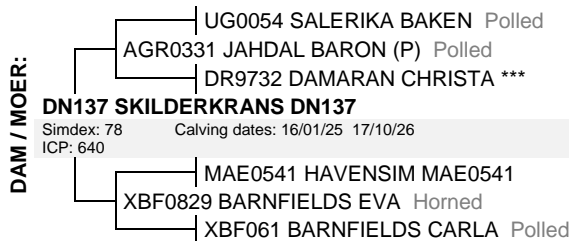
DES NEL, POSBUS 19 BARKLY-OOS 9786 TEL:27795680947

**SIMMENTALER**

Birth Date: 2017/10/26 DNA:  
Age: 22 months  
Herdbook: SP  
Horn:

Reg. Status: REG  
Inspection Date: 2019/05/24

**MALE/MANLIK**  
Reg. No: 103129862



August 2019 South African Simmentaler GROUP BREEDPLAN

Simmentaler SA - [www.simmentaler.org](http://www.simmentaler.org) / [info@simmentaler.org](mailto:info@simmentaler.org) / 051 446 0580/2

2019	CED	CEM	BW	200	400	600	MCW	MILK	SC	DC	EMA	IMF%	RBY%	SFL	SGF	TS
EBV	+1.8	+2.2	+0.5	+14	+20	+23	+19	+2	--	--	--	--	--	+55	+91	+102
ACC	35%	29%	68%	60%	55%	55%	55%	38%								
BREED	+0.8	+1.0	+1.4	+17	+27	+33	+34	+5	+0.3	-0.5	+0.3	+0.1	+0.2	+56	+110	+138



**Seller's remarks / Verkoper se kommentaar:**

R \_\_\_\_\_

**SKILDERKRANS DN1744**

**DN1744**

**Lot. 11**

DES NEL, POSBUS 19 BARKLY-OOS 9786 TEL:27795680947

**SIMMENTALER**

Birth Date: 2017/10/23 DNA:  
Age: 22 months  
Herdbook: SP  
Horn:

Reg. Status: REG  
Inspection Date: 2019/05/24

**MALE/MANLIK**  
Reg. No: 103129847



August 2019 South African Simmentaler GROUP BREEDPLAN

Simmentaler SA - [www.simmentaler.org](http://www.simmentaler.org) / [info@simmentaler.org](mailto:info@simmentaler.org) / 051 446 0580/2

2019	CED	CEM	BW	200	400	600	MCW	MILK	SC	DC	EMA	IMF%	RBY%	SFL	SGF	TS
EBV	+0.5	+0.0	+0.6	+13	+21	+26	+28	+3	--	--	--	--	--	+39	+79	+107
ACC	35%	27%	70%	63%	58%	58%	56%	46%								
BREED	+0.8	+1.0	+1.4	+17	+27	+33	+34	+5	+0.3	-0.5	+0.3	+0.1	+0.2	+56	+110	+138



**Seller's remarks / Verkoper se kommentaar:**

R \_\_\_\_\_